

THE **FREE** WESSEX ARTS AND CULTURE GUIDE

EVOLVER

September and October 2019



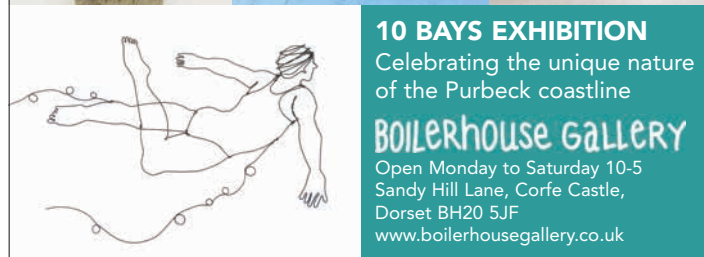


'The Mapping of Memory No. 15'

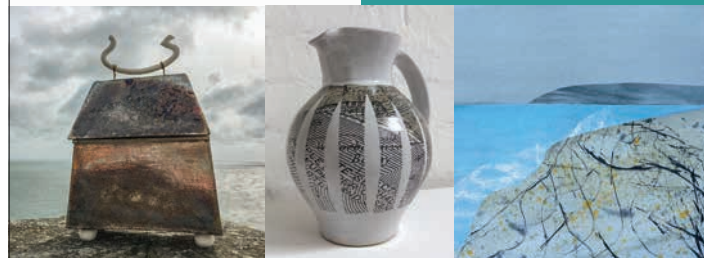
ANNIE WARD: RECENT WORK 12 - 23 October



THE GALLERY
Symondsbury Estate, Symondsbury, Bridport, DT6 6HG
Open daily 10.30am - 4.30pm
lymebayarts.co.uk / 01308 301326
Facebook, Instagram, Twitter: [lymebayarts](#)



10 BAYS EXHIBITION
Celebrating the unique nature of the Purbeck coastline
BOILERHOUSE GALLERY
Open Monday to Saturday 10-5
Sandy Hill Lane, Corfe Castle,
Dorset BH20 5JF
www.boilerhousegallery.co.uk



Tincleton Gallery

contemporary fine art in Dorset

Coastal Impressions

**Philippa Headley and
gallery artists**

Fri 20th Sep – Sun 10th Nov



detail from "Just Paddling"
oil on board by Philippa Headley

The Old School House, Tincleton, near Dorchester, DT2 8QR
Friday / Saturday / Sunday / Monday • 10am – 5pm
01305 848909 • www.tincletongallery.com

44AD
artspace

SIDEWAYS glance

a WESCA group exhibition

**24-29
Sept
2019**



Open daily 12 - 6pm (Sun 1- 4pm)

Artists' talks: Sun 29 Sept 2 - 4pm

44AD artspace
4 Abbey St, Bath
BA1 1NN



www.wesca.co.uk

EVOLVER 113

EXHIBIT A



RUTH PIPER: 'THE ROAD'

Acrylic on canvas (90 x 90 cm)

ARTIST'S STATEMENT: "My current body of work in progress is a meditation on the concept of human mortality and extinction. In particular the effect of this knowledge on our sense of place and belonging. Imaginary landscapes and corners of the natural world come together among the detritus of our species, where I look for evidence of new growth that transform into emblems of hope where dreams and reality merge."

ruthpiper.com

EVOLVER

THE WESSEX ARTS AND CULTURE GUIDE

Editor SIMON BARBER

Assisted by SUZY RUSHBROOK

Evolver Writer

FIONA ROBINSON www.fionarobinson.com

Graphic Design SIMON BARBER

Website OLIVER CONINGHAM at AZTEC MEDIA

Front Cover

'AS THE CROW SEES IT'

by LIZ SOMERVILLE

(Somerset Art Weeks Venue 51)

EVOLVER MEDIA

8 BUCKLAND ROAD, PEN MILL TRADING ESTATE,
YEOVIL, SOMERSET BA21 5EA



Email simon@evolver.org.uk

Telephone 01935 808441

Website evolver.org.uk

Instagram [evolvermagazine](https://www.instagram.com/evolvermagazine)

Twitter @SimonEvolver

Facebook [facebook.com/EvolverMagazine](https://www.facebook.com/EvolverMagazine)

Published by EVOLVER MEDIA LIMITED

Pre-Press by FLAYDEMOUSE

01935 479453 / flaydemouse.com

Printed by STEPHENS & GEORGE

Distributed by ACOUSTIC

07456 009377 / everett190@btinternet.com

DEADLINE FOR EVOLVER 114

November and December 2019

MONDAY 7 OCTOBER

VISUAL ARTS

September and October 2019



'SECRET PLACE' (2018)

MARZIA COLONNA

Marzia Colonna's great talent is to take us directly into her subject matter. Whether she is working in collage or in sculpture, she is able to convey the physical sensations of being in a particular place, time and situation.

"I try to become a part of my subjects, animate and inanimate, to get to the essence of what they are," she says. Achieving that, she takes us along with her.

Marzia Colonna's collages capture the exceptional landscape of West Dorset with the eye of someone who knows and understands it, in different weather and times of year, with a wonderful sense of space and light.

Her still lives and flowers are beautifully observed and often from her studio and garden. Her disciplined approach to

collage underpins the work with a strong abstract quality of mark and pattern. Her collages are made entirely from paper painted by her beforehand.

"When I work with collage I feel I am sculpting with paper and painting at the same time. It is fast and furious work, holding on to and trying to replicate the memory of the landscape that I have experienced, not just visually in its form and colour, but also in the impact created in my mind by the wind, sun, rain, smells and sounds."

Colonna's sculpture is at the heart of her work as an artist. It fascinates her that wherever we come from, whatever our race or religion, we feel the same basic needs and desires. She sees the body as the vessel of human emotion, touching in its combination of fragility and strength.

The sculptural works in this exhibition are concerned with the metamorphic female form. Relating the young girl's development to nature, a butterfly emerging as a young girl in Chrysalis, the nymph rising from the sea in Young Venus. Similarly tender but with a more solid base, is the strong punctured form of Mother Earth.

Colonna works intuitively, reaching for the sensations she wants to communicate with a lifetime of craft, technique and experience to call upon.

14 September - 10 November: Sladers Yard Gallery, WEST BAY, near Bridport, DT6 4EL. Monday - Saturday 10am - 4.30pm, Sunday 12noon - 4.30pm. 01308 459511 / sladersyard.co.uk.

marziacolonna.com

VISUAL ARTS

SUSAN KNIGHTS, LINDA PATTERSON, JEANETTE LAW
Until 5 September

The Hayloft Gallery, 14 Wick Lane, CHRISTCHURCH, BH23 1HX. 10am - 5pm. 01202 428004.

ANDY BLAKE: 'LAND & SEA IN OILS'
Until 6 September

The Hub, Brock Way, VERWOOD, BH31 7QE. Monday - Friday 6.30am - 10pm, Saturday and Sunday 8.30am - 6.30pm. 01425 610490. "Atmospheric and expansive seascapes, combined with trademark detailed local and coastal oil paintings."

BOB AND ROBERTA SMITH: 'PAINT FREEDOM'

Until 6 September

Shire Hall Historic Courthouse, High West Street, DORCHESTER, DT1 1UY. 10am - 5pm. £9.50 / £5. 01305 261849.

'CIRCLE OF TREES'

Until 7 September

ACE Arts, Market Place, SOMERTON, TA11 7NB. Tuesday - Saturday 10am - 5pm. acearts.co.uk. "Artists' books by the ABCD group. A love of words, materials and imaginative book construction results in a wonderfully varied and intriguing exhibition."

'TOWN & COUNTRY'

Until 7 September

Ilminster Arts Centre, The Meeting House, East Street, ILMINSTER, TA19 0AN. Monday - Friday 9.30am - 4.30pm, Saturday 9.30am - 2.30pm. 01460 54973. "Wildlife paintings and prints by Chris Sinden and Jackie Cox."



SOPHIE LONG: 'THEIR VOICE'

Until 8 September

Bocabar, The Red Brick Building, Morland Road, GLASTONBURY, BA6 9FT. Monday - Sunday 9am - 5pm. 01458 440558. "Sophie's colourful and evocative paintings speak for the wild and endangered creatures we share this planet with."



'COWS GRAZING, STORMY SUNSET' (Oil on canvas)

COLIN WILLEY: COUNTRY AND COAST

"New paintings by one of Dorset's leading landscape artists."

Until 1 October: Gallery On The Square, Queen Mother Square, DORCHESTER, DT1 3BL. Monday - Saturday 9.30am - 5pm, Sunday 11am - 4pm. 01305 213322 / gallerypoundbury.co.uk.

'THE SUMMER SHOW'

Until 8 September

Devon Guild of Craftsmen, Riverside Mill, BOVEY TRACEY, TQ13 9AF. 10am - 5.30pm. 01626 832223 / crafts.org.uk. "Ceramics, textiles and print."

'NATURAL SELECTION'

Until 15 September

Bristol Museum & Art Gallery, Queens Road, BRISTOL, BS8 1RL. Tuesday - Sunday 10am - 5pm. 0117 922 4749. "Andy Holden and his ornithologist father Peter take us on a journey from nest-building to egg-collecting, bringing together their personal

collections of found objects with sculpted birdsong, a human-scale sculpture of a bower bird, exquisite replica eggs crafted from porcelain, and two new video works."

'WAR AND RUMOURS OF WAR'

Until 15 September

Victoria Art Gallery, Pulteney Bridge, BATH, BA2 4AT. 10.30am - 5pm. £4.50. victoriagal.org.uk. "Exhibition largely from The Hepworth Wakefield's outstanding collection of 1940s British works on paper, including pieces by Henry Moore, Graham Sutherland, Barbara Hepworth and John Piper."

JOEL FISHER AND DAVE KING

Until 15 September

The Shippon Gallery, Hook Farm, CHARDSTOCK, Axminster, EX13 7DD. Sunday 2 - 5pm. 01460 220021. "Drawings and sculpture."

'A TALE OF TWO CITIES'

Until 15 September

Victoria Art Gallery, Pulteney Bridge, BATH, BA2 4AT. 10.30am - 5pm. victoriagal.org.uk. "Bernard Ollis was born in Bath and spent his formative years here. The works in this show are based on memories and recent visits to the cities of Bath and Paris."

Jo Lathwood and Paul Blakemore

14 September – 26 October 2019

WELL TRODDEN

WRONG WAYS

Thelma Hulbert Gallery

Thelma Hulbert Gallery, Elmfield House, Dowell Street, Honiton, Devon, EX14 1LX
01404 45006 info@thelmahulbert.com www.thelmahulbert.com
Open: Tues - Sat 10am - 5pm | Free Admission

CLOTH ROAD arts

VISUAL ARTS
Promoting Artists and Artisans in Wiltshire

ARTS WEEK
AN OPEN STUDIOS ART TRAIL

Join the fresh look Cloth Road Arts Week
2 - 10 May 2020
Artists and Makers in Bradford-on-Avon, Trowbridge, Melksham and the surrounds

Print | Painting | Ceramics | Jewellery | Photography
Drawing | Textiles | Sculpture | Installation & more....

CALL FOR ARTISTS
Applications Open: 24 August 2019
Deadline: 30 November 2019
*Earlybird Discount

www.clothroadartists.com

ILMINSTER
arts centre
AT THE MEETING HOUSE

★ ART ★ MUSIC ★
CRAFTS ★ CAFE
www.themeetinghouse.org.uk


SECRETS & CODES 9 SEPTEMBER - 5 OCTOBER
Exhibition by South-West Textiles - inspired by 100 years of GCHQ

MY LOCALITY 7 - 26 OCTOBER
Textile work by South Somerset Embroiderers' Guild



RA Summer Exhibition 2019
'Painting No. 204'

Clive Melbourne
clive.melbourne@btinternet.com
www.artistsandillustrators/clivemelbourne



DEVON OPEN STUDIOS VENUE 42
Alison Brown and Robin Shelton
Jewellery, porcelain vessels and more at Combewater Studios, near Honiton
www.alisonbrownceramics.wordpress.com
07811 102216 / 01404 831556



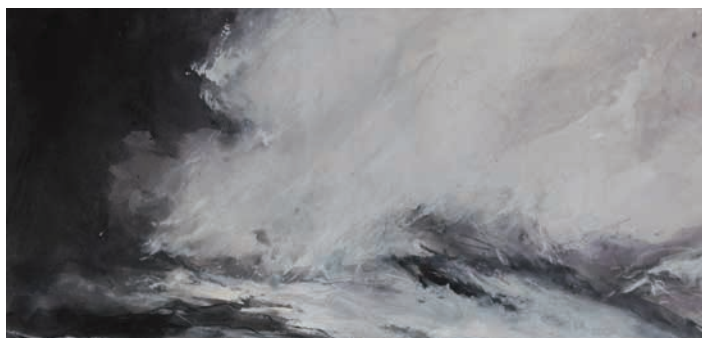
Contemporary Interiors in Wood

5 rooms full of unique wood work from over 200 craftsmen working in the UK
Ranging from kitchenware to one-off jewellery boxes and furniture
Coffee shop and small children's play area

Celebrating 40 years of promoting British woodwork in Abbotsbury 1979 - 2019

Rodden Row, Abbotsbury, DT3 4JL
www.danselgallery.co.uk 01305 871515
Open 10am - 5.30pm every day

VISUAL ARTS



JANETTE KERR 'NORTH-WESTERLY WINDS, NESS OF BAKKA'
(Study on watercolour paper)

IGNITING SIGHT

"This summer, while JMW Turner's painting, *Bridport, Dorsetshire*, is showing at Bridport Museum, we celebrate Turner in Bridport by exploring the ways in which his influence lives on in contemporary landscape painting, particularly in the work of Fred Cumming, Luke Elwes, Vanessa Gardiner, Frances Hatch, Janette Kerr, and Alex Lowery, all of whom to some extent belong in the great descriptive English Romantic tradition which began with Turner's truly great paintings."

Until 8 September: Sladers Yard, WEST BAY, Bridport, DT6 4EL.
Monday - Saturday 10am - 4.30pm, Sunday 12noon - 4.30pm. 01308 459511 / sladersyard.co.uk.

FUNDRAISING ART AUCTION

Until 23 September
Central Gallery, Royal United Hospitals Bath, Combe Park, BATH, BA1 3NG.
Monday - Sunday 8am - 8pm. 01225 824987 / artatruh.org / bathartistsstudios.co.uk.

'TURNER IN BRIDPORT'

Until 28 September
Bridport Museum, 25 South Street, BRIDPORT, DT6 3RJ. Monday - Saturday 11am - 4pm. 01308 458703 / bridportmuseum.co.uk. "A special exhibition which includes the loan of JMW Turner's watercolour of *Bridport Harbour from Bury Art Museum in Lancashire*."



on John's early to mid-career, examining his reputation and looking in-depth at his achievements in drawing and etching."



MARK JESSETT: 'SEMI PRECIOUS'

Until 29 September
The Whittox Gallery, Whittox Lane, FROME, BA11 3BY. Tuesday - Friday 9am - 5pm, Saturday 10am - 5pm, Sunday 10am - 4pm. 07712 523734 / thewhittoxgallery.com. "Devon based abstract painter Mark Jessett presents his largest works to date. Paintings on paper, manifesting a confused fascination with treasure and a precarious relationship with colour."



STEPHEN BISHOP: 'WHAT SEAS, WHAT SHORES, WHAT ISLANDS'

Until 30 September
Lobby, RNLI College, West Quay Road, POOLE, BH15 1HZ. 9am - 5pm. 0300 300 7654 / stephenbishop.co.uk. Paintings.

'TIME RECLAIMED'

Until 28 September
Artwave West, MORCOMBELAKE, DT6 6DY. Tuesday - Saturday 10am - 5pm. 01297 489746 / artwavewest.com. "Behind the physicality of Sophie Capron's highly textured paintings, richly made up of layers and painterly marks, there lies a fascination with the constantly evolving impact of human presence on the environment."

AUGUSTUS JOHN: 'DRAWN FROM LIFE'

Until 29 September
The Salisbury Museum, The King's House, 65 The Close, SALISBURY, SP1 2EN. Monday - Saturday 10am - 5pm, Sunday 12noon - 5pm. £8 / £4. 01722 332151 / salisburymuseum.org.uk. "This major retrospective of the work of artist Augustus John (1878 - 1961) focuses

VISUAL ARTS

DIANE MACLEAN: 'BEYOND'

Until 30 September

Salisbury Cathedral, The Close, SALISBURY, SP1 2EJ. Monday - Saturday 9am - 5pm, Sunday 12noon - 4pm. 01722 555120 / salisburycathedral.org.uk/events.

"Award winning sculptor Diane Maclean's large-scale works incorporate light, colour and movement. Created in response to places, themes or ideas, they combine reflective surfaces and open structures and invite interaction."



SARAH JACK

Until 30 September

The Exchange, STURMINSTER NEWTON, DT10 1FH. Monday - Saturday 9am - 9.30pm, Sunday 9am - 12noon. 01258 475137. "Sarah Jack's exhibition of Dorset landscapes includes mixed media paintings of Hardy's Cottage, Corfe Castle, Hambledon Hill and Weymouth."

GEORGE MEYRICK: 'SHAPED SPACE'

Until 5 October

Drawing Projects UK, Bridge House, 10 Stallard Street, TROWBRIDGE, BA14 9AE. Thursday - Saturday 12noon - 4pm, Sunday 10am - 2pm. 01225 767993 / drawingprojects.uk.

'NOMADS: HOMES ON THE MOVE'

Until 6 October

The Royal Albert Memorial Museum & Art Gallery, Queen Street, EXETER, EX4 3RX. Tuesday - Sunday 10am - 5pm. 01392 265858 / exeter.gov.uk/RAMM. "Explore photographs and films showing examples of how over 30 million nomadic people in the world today have adapted to life on the move."



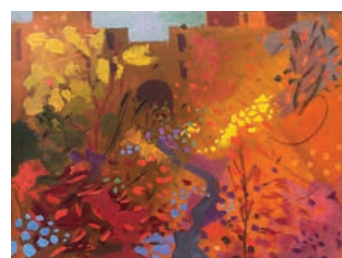
ALISON BROWN 'ELEPHANT BEADS'

DEVON OPEN STUDIOS

Devon Open Studios is a unique opportunity to meet artists in their studios in some of the most beautiful, unexplored parts of Devon. In addition to being able to buy art direct from the creator, many demonstrate, give talks or give you a chance to have a go. You can explore venues ranging from potter's studios in meadows to medieval barns, sinuous sculpture gardens or garrets by the sea. These hidden havens reveal fascinating work in every medium that allows the opportunity to purchase affordable art, directly from the artist, and without gallery commission.

7 - 22 September: Locations throughout DEVON.

devonartistnetwork.co.uk



'RE-FORMATION'

Until 6 October

The Bishop's Palace, WELLS, BA5 2PD. 10am - 6pm £9 / £8.95. 01749 988111 / bishopspalace.org.uk. "A new collaboration between Heritage Courtyard Gallery and Studios and The Bishop's Palace. This exhibition showcases artists from the South West and beyond, with featured pieces exploring the themes and history of the Palace site."

Above: Rod Walker 'Glow Garden'

'CLAYMAKERS'

Until 12 October

Kobi & Teal, 57 Catherine Street, FROME, BA11 1DA. Tuesday - Saturday 10am - 4.30pm. 07737 367419 / kobiandteal.co.uk. "A dynamic collection of ceramics from some of the UK's most notable makers. The group exhibition explores the exciting use of clay in contemporary art, craft and design."



DAVID RINGELL: 'NEW VIEWS ON FAMILIAR PLACES'

Until 14 October

The Claremont Community Centre, Eastbourne Avenue, BATH, BA1 6EN. Thursday 10am - 2pm, Saturday (7 September + 12 October) 9am - 1pm. 01225 469127. Paintings.

ART FOR LIFE FUNDRAISER EXHIBITION

Until 15 October

The Wall Gallery Space, Musgrove Park Hospital, TAUNTON, TA1 5DA. 9am - 9pm. artforlife.nhs.uk. "An exhibition of work generously gifted by artists who have worked with Art for Life."

A vibrant showcase of arts & crafts across Devon



A FREE full colour event guide is available from all leading Devon art venues, Tourist Information Centres and libraries. Or call or email us for a copy: 07768 164560 or openstudios@devonartistnetwork.co.uk

www.devonartistnetwork.co.uk

DEVON
Artist
Network
Open Studios
Sat 7 - Sun 22 September



URSULA LEACH 'INTRUDE' (Oil on canvas, 60 x 80 cm)

GROUP 7: CONNECTIONS

"Recent work, including paintings, drawings and prints, by Brian Bishop, Martyn Brewster, Bonnie Brown, Fran Donovan, Michelle Griffiths, Ursula Leach, and Peter Symons."

2 September - 12 October: Atkinson Gallery, Millfield School, STREET, BA16 0YD. Monday - Saturday 9.30 - 5pm. atkinsongallery.co.uk.

'WILD HARES AND HUMMINGBIRDS: THE NATURAL HISTORY OF AN ENGLISH VILLAGE'

Until 26 October
The Museum of Somerset, Taunton Castle, Castle Green, TAUNTON, TA1 4AA. 10am - 5pm. £3 / £2. 01823 255088. "This exhibition brings together the celebrated nature writing of Stephen Moss with beautiful, original illustration by the graphic artist Stephanie Cole."

PETER HAYES AND BENEDICT LEACH

Until 29 October
John Leach Gallery, Muchelney Pottery, MUCHELNEY, near Langport, TA10 0DW. Tuesday - Saturday 10am - 1pm

and 2 - 4pm. 01458 250324 / johnleachpottery.co.uk. "New exhibition of ceramic sculpture by Peter Hayes and black and white photography by Benedict Leach. Signed pottery, leather work and silver jewellery also on display in the gallery."

'A PEACE OF HEAVEN'

Until 31 October
St Aldhelm's Church, St Aldhelm's Road, POOLE, BH12 1AD. 9am - 5pm. 01202 764420 / st-aldhelm.com. "Our enchanted - but fragile and threatened - world of nature evoked through printmaking, paper-cutting and poetry by many artists and authors. Explore it meditatively as you might a secret forest."

'EELES POTTER'S LAST WOOD FIRING'

Until 31 October
North Undercroft, Forde Abbey and Gardens, CHARD, TA20 4LU. 10.30am - 4.30pm. £13 / £5 / free entry. 01308 868257. "New stoneware, porcelain and raku by the Eeles pottery."

'ANIMATING EARLY MAN'

Until 3 November
M Shed, Princes Wharf, Wapping Road, BRISTOL, BS1 4RN. Tuesday - Sunday 10am - 5pm. £6 / £5. 0117 922 4749. "Take a trip behind the camera this with this blockbuster exhibition, showing how the world-famous Bristol based studio Aardman made their mammoth movie, Early Man."

'BIRDS WITHOUT BORDERS'

Until 3 November
The Royal Albert Memorial Museum & Art Gallery, Queen Street, EXETER, EX4 3RX. Tuesday - Sunday 10am - 5pm. 01392 265858 / exeter.gov.uk/RAMM. "A playful mix of art, science and social history explores the incredible feats of migratory birds."

'THE ART OF THE POTTER: SOMERSET SLIPWARE'

Until 9 November
Somerset Rural Life Museum, Chilkwell Street, GLASTONBURY, BA6 8DB. Tuesday - Sunday 10am - 5pm. £7.50 / £3.50. 01458 831197 / srlm.org.uk. "Exhibition exploring how slipware ceramics developed in Somerset from the late 1600s onward."



WILLIAM DE MORGAN: 'SUBLIME SYMMETRY'

Until 2 February
Russell-Cotes Art Gallery & Museum East Cliff Promenade, BOURNEMOUTH, BH1 3AA. Tuesday - Sunday 10am - 5pm. £7.50 / £4. 01202 451858 / russellcotes.com. "William de Morgan revolutionised ceramic design in the late-Victorian period. From his fantastical beasts which wrap themselves around his ceramic vases, to his fanciful flora which meander across tiles, his designs fascinated his contemporaries and continue to captivate today."

'A SENSE OF PLACE'

Until 15 March
The Royal Albert Memorial Museum & Art Gallery, Queen Street, EXETER, EX4 3RX. Tuesday - Sunday 10am - 5pm. exeter.gov.uk/RAMM. "Important works from RAMM's fine art collection from the 18th century to the late 20th century exploring the theme of place."



THE CREATIVE GALLERY

Showcasing ceramics, paintings, photography, jewellery and glass by local artists



"Plants in Print"
Robin Moorcroft
3rd-30th September











"Christmas is Coming"
Kathryn D'Arcy
1st-31st October

St John's Hill, Wareham, Dorset BH20 4NB t 01929 551700 e fiona@creativegallerywareham.co.uk
Open daily 10am-5pm until end of September, then Monday-Saturday 10am-5pm

VISUAL ARTS



HELEN SIMPSON 'WINTERED SWEETCORN'

SIDWAYS GLANCE

"Twenty artists from Wessex Contemporary Arts show bold ceramics and textile pieces, evocative paintings and 3D structures."

24 - 29 September: 44AD Artspace, 4 Abbey Street, BATH, BA1 1NN. Monday - Saturday 1noon - 6pm, Sunday 1 - 4pm. 07818 098788 / wesca.co.uk.

AUTUMN EXHIBITION

1 September - 31 October

Abbotsbury Studio, Rodden Row, ABBOTSBURY, DT3 4JL. Monday - Friday 10am - 5pm. 01305 871479 / abbotsburystudio.co.uk. "Paintings and drawings by Abbotsbury Studio artists."

PHOTOGRAPHY EXHIBITION

2 September - 5 October

The Beehive, Dowell Street, HONITON, EX14 1LZ. Monday - Friday 10am - 5.30pm, Saturday 10am - 12noon. "Two collections of creative and fascinating images by West Country photographers Richard Lawrence and Issy Harnett."

JOHN SARGEANT: 'IMPACT'

3 - 28 September

Mezzanine Gallery, Lighthouse, 21 Kingland Road, POOLE, BH15 1UG. Tuesday - Saturday 10am - 9pm. 01202 280000 / lighthousepoole.co.uk.

"Printer and painter John Sargeant will show etchings, viscosity prints, silkscreen and mixed media prints based on his growing interest in industrial and urban landscape. Exploring the multiple and fragmented visual signs and messages transmitted to us as we move inside cityscapes - road signs, shop windows, demolition sites, rebuilding work, traffic, tower blocks - has led John on to new imagery using an increasingly abstract and collage format."

Ann Goldsmith: Fragile Blue

Young
Gallery

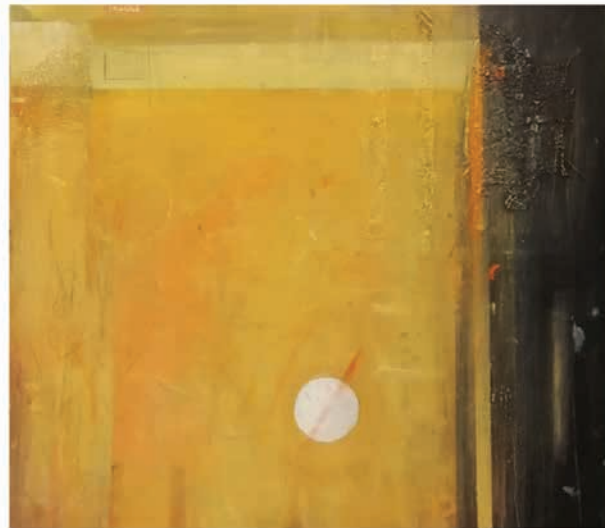
Young Gallery
Market Place
Salisbury
SP1 1BL

7 September - 6 October 2019

Exhibition Preview: 6 September, 6-8pm

Open Monday - Saturday, 10am - 4pm

01722 343275



An exhibition spanning over fifty years of Ann Goldsmith's career as a painter responding to elements of a fragile world, including the delicate space between love and death.

South West Art Fair

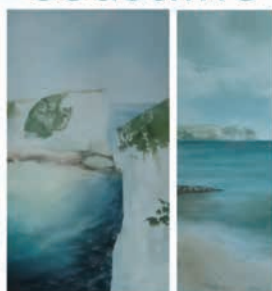
October 25th, 26th, 27th 2019
10am to 4pm

In aid of Children's Hospice South West
**King Edward's School,
North Road, Bath BA2 6HU**
Showcasing over 150 artists

ArtGallerySW

Are you interested in taking part? Contact us
T | 07941 459384 E | info@artgallerysw.co.uk
www.artgallerysw.co.uk

Coastline



a response in paint, print,
ceramics, wood and metal by
Laura Jolliffe
at Shaftesbury Arts Centre
9th-22nd October 2019 10.00-4.00

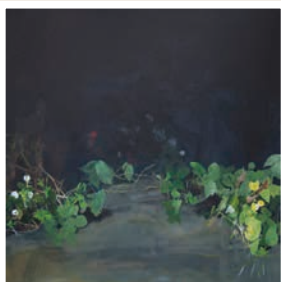


EXHIBIT A

Artists and photographers are invited to submit work for consideration as next issue's page 3 **EXHIBIT A** by emailing images to: simon@evolver.org.uk

Devon Guild of Craftsmen



Printmaker: Judith Woodings

Branching Out

5 October - 17 November

Devon Guild Members took the theme of wood and created beautiful pieces in a variety of methods and media. Be inspired by our makers in this fascinating and beautiful collection. Let your imagination wander.....

The Devon Guild of Craftsmen, Riverside Mill, Bovey Tracey, Devon. TQ13 9AF. Open daily, 10am - 5.30pm.

Free Entry. 01626 832223. www.crafts.org.uk, Follow us @devonguildcrafts



Ruth Ander: Open Studio

September: Friday 20th 12noon - 5pm, Saturday 21st 4.30 - 6.30pm, Sunday 22nd 11am - 4pm

Monoprints, Etchings and Cyanotypes - Demonstrations throughout The Studio, 2 The Square, Puddletown, near Dorchester, DT2 8SL

VISUAL ARTS



'PUCKPITS BEECH'

ANCIENT AND REMARKABLE TREES OF THE NEW FOREST

"Large format photographs from a selection of the magnificent trees that can be found deep within the woodlands of The New Forest. These trees that have survived over the centuries are now under increased threats from climate change, disease and development."

Until 28 September: The Atrium Gallery, Bournemouth University, Poole House, Fern Barrow, POOLE, BH12 5BB. Monday - Saturday 9am - 5pm. 01202 524111 / davidmartindalerussell.com.

ROBIN MOORCROFT: 'PLANTS IN PRINT'

3 - 30 September

Creative Gallery, St John's Hill, WAREHAM, BH20 4NB. 10am - 5pm. 01929 551700 /

creativegallerywareham.co.uk. "A fabulous selection of Robin Moorcroft's individually inked prints created using collagraphy, lino cutting and monoprinting, inspired by the world of plants."

POOLE LEISURE PAINTERS

4 - 28 September

Wimborne Resource and Learning Centre, 41 - 44 King Street, WIMBORNE, BH21 1EA. Monday - Friday 10am - 4pm.

pooleleisurepainters.co.uk. "Autumn exhibition."

'21ST CENTURY CONTEMPORARY'

4 September - 4 October

Hatch Gallery, 7a Church Street, CHRISTCHURCH, BH23 1BW. Tuesday - Saturday 10.30am - 4pm. 07787 517958 / hatchgallery.co.uk. Paintings by Martyn Brewster, Michelle Griffiths, and Ursula Leach.

DANIEL PETTITT: 'TIN DECADE'

5 - 25 September

The Roper Gallery, Bath Artists' Studios, The Old Malthouse, Comfortable Place, Upper Bristol Road, BATH, BA1 3AJ. 12noon - 5pm. 01225 482480 / bathartistsstudios.co.uk. "Daniel Pettitt graduated from Bath College of Art and Design and the Royal College of Art and now lives and works in London. Themes of repetition, countermeasure, rotation, and erosion are all at work in the paintings and drawings that comprise this exhibition."

YEOVIL CREATIVES

5 - 30 September

The Hub, 13 Buckland Road, Pen Mill Trading Estate, YEOVIL, BA21 5EA. Monday - Friday 9.30am - 4.30pm. eastvilleproject.org.uk.

JAMES LYNCH: 'NEW WORKS'

5 September - 6 October

Long Gallery, Messums Wiltshire, Place Farm, Court Street, TISBURY, SP3 6LW. Wednesday - Saturday 10am - 5pm, Sunday 11am - 4pm. 01747 445042 /

messumswiltshire.com. "James Lynch has developed the exacting medium of egg tempera over many years - played with it and improvised - to develop an instantly recognisable style that perfectly captures his favourite landscape of Wiltshire, and the area surrounding Messums Wiltshire."

'TAKE 5 ARTISTS'

5 September - 9 October

Mulberry Room, Shelley Theatre, Beechwood Avenue, Bournemouth, BH5 1LX. Monday - Friday 10.30 am - 3.30pm, Saturday 11am - 2pm. 07887 506557 / take5artists.com. "Five contemporary artists invite you to take a break, recharge your batteries and immerse yourself in the world of art."

THE SHAFESBURY GROUP

6 September

Shaftesbury Town Hall, 21 High Street SHAFTESBURY, SP7 8LY. 10am - 4pm. 01747 853822. "Affordable, contemporary fine art by local professional artists."

'ARTBEAT'

6 - 15 September

Kennaway House, Coburg Road, SIDMOUTH, EX10 8NG. 10am - 4.30pm. 07717 810460 / kennawayhouse.org.uk. "7th annual exhibition for 10 East Devon artists. Affordable, original art, prints and cards. An exciting and varied show from this talented group."

'CROSSING BOUNDARIES'

6 - 18 September

Centrespace, 6 Leonard Lane, BRISTOL, BS1 1EA. 11am - 6pm. 07708 406888 / idartists.co.uk. "Formed in 2012 as Inter-Disciplinary Artists, iD-Artists have exhibited regularly across the South West. In their latest exhibition, Gail Mason, Sara Parsons, Stephanie Wooster, Tina Hill, Vicki Campbell and Dawn Mason explore the spaces and connections between their practices."

LUCY AUSTIN: 'ANALOGUE'

6 - 28 September

That Art Gallery, 17 Christmas Steps, BRISTOL, BS1 5BS. Tuesday - Saturday 11am - 6pm. 0117 329 2522 / thatartgallery.com. Paintings.

SOUTH WEST SOCIETY OF BOTANICAL ARTISTS

DRAWING, MIXED MEDIA, PAINTING

- One of the best exhibitions of botanical art in the West Country, featuring beautiful paintings in various mediums and with in-depth knowledge of plant life and habitat.
- Many members hold gold, silver gilt or silver medals from the Royal Horticultural Society.
- Prints and cards for sale.
- Demonstrations.

Location: Taunton Library, Paul St, TA1 3XZ

Opening times: 10am-5pm

Dates: Mon 30 September to Sat 5 October

Contact: merielthurstan@btinternet.com

Image: Penny Brown



VISUAL ARTS

'BRISTOL FACES #2'

7 and 8 September

Hours, 10 Colston Yard, BRISTOL, BS1 5BD. 11am - 5pm. 07971 889767 / varosha.co.uk. "This exhibition is the second in an ongoing portrait project by sculptor Sophie Howard and painter Varosha. They have chosen their sitters in order to capture the essence of Bristol."



COMBE DOWN ART TRAIL

7 and 8 September

Locations in and around COMBE DOWN, near Bath, BA2. 10am - 5pm. 07891 409490 / cdarttrail.com. "Follow lanterns through this beautiful village to fifteen fascinating open art venues plus workshops."

POP-UP FRINGE

7 - 15 September

Various venues in and around BRIDPORT. 07929 118289. "Intriguing events running alongside this years Bridport Open Studios: screenings, walks, talks, workshops, zines, sound installation, artwork in unusual places. Come along and discover!"

10 PARISHES FESTIVAL

7 - 15 September

Locations in and around WIVELISCOMBE, Somerset. 01984 624777 / 10parishesfestival.org.uk. "Open studios with over 60 artists with live performance and community events."

EELES POTTERY OPEN STUDIO

7 - 15 September

Eeles Family Pottery, MOSTERTON, Beaminster, DT8 3HN. 10am - 4pm. 01308 868257 / eelespottery.co.uk. "Experience the excitement of a pot lifted from the kiln at temperatures of over one thousand degrees centigrade and placed onto sawdust that instantaneously combusts into an inferno of flames."



MAUREEN SEED 'WILD GARLIC'

PLANTS WITH A PURPOSE

"Artists demonstrate how vital plants are to us."

3 - 22 October: Bath Royal Literary & Scientific Institution, 16 - 18 Queen Square, BATH, BA1 2HN. 10am - 4pm. 07774 866349 / bsba.co.uk.

'THE BEAUTY OF MOVEMENT'

7 - 15 September

Extons Barn, MILVERTON, TA4 1RG. 11am - 5pm. yogainsomerset.co.uk. "Unbelievable photographs linking yoga and art."

LYME BAY ARTS: MEMBERS' EXHIBITION

7 - 22 September

The Gallery, Symonds Estate, SYMONDSBURY, near Bridport, DT6

6HG. 10.30am - 4.30pm.

lymebayarts.co.uk. "Recent work by artist-members of Lyme Bay Arts."

'HARVEST'

7 September - 6 October

Purbeck New Wave Gallery, 25 Commercial Road, SWANAGE, BH19 1DF. Tuesday - Sunday 10.30am - 5pm. 07434814384 / purbecknewwave.co.uk. "Open art exhibition showcasing both established and amateur artists."

'BODY: ART'

7 September - 6 October

Round Tower, Black Swan Arts, 2 Bridge Street, FROME, BA11 1BB. Monday - Saturday 10am - 4pm. 01373 472264. "The second exhibition from the Black Swan Guild."



'ABSTRACTION AT THE BOMB SHELTER'

8 - 15 September

The Bomb Shelter, Fore Street, BEER, EX12 3EQ. 10am - 5pm. 01297 20064. "Recent paintings and sculpture by Hilary Arnold."

Above: 'Dash' (Acrylic on board)

'SECRETS & CODES'

9 September - 5 October

Ilminster Arts Centre, The Meeting House, East Street, ILMINSTER, TA19 0AN. Monday - Friday 9.30am - 4.30pm, Saturday 9.30am - 2.30pm. themeeetinghouse.org.uk. "South West Textiles present work inspired by the esoteric world of secrets and codes."

KATE WILSON: 'THE LAST FULL MEASURE OF DEVOTION'

13 September - 16 November

Salisbury Arts Centre, Bedwin Street, SALISBURY, SP1 3UT. 10am - 3pm. 01722 320333 / wiltshirecreative.co.uk. "Studio ceramicist Kate Wilson PhD explores emotional engagement with the banal in her practice. The work consists of a loving cup for each British service life lost in Afghanistan during the conflict."

CAROLYN FINCH ART GROUP

14 - 22 September

Butterfly House, Castle Gardens, New Road, SHERBORNE, DT9 5NR. 10am - 4pm. 07917 190309. Paintings.

FINGERPRINT

14 September - 6 October

ACE Arts, Market Place, SOMERTON, TA11 7NB. Tuesday - Saturday 10am - 5pm. 01458 273008 / acearts.co.uk. "Bronwen Bradshaw, Terry Budgen, Pennie Elick, Jenny Graham, Rosalind Marchant, Tony Martin, Vera Sheaf and Jacy Wall work together regularly at the Dove Etching Studio, Butleigh, inspiring and supporting each other."



SWAc South West Academy
OPEN EXHIBITION 2019
12th-23rd Nov - Exeter Castle, Exeter
Closing date September 29th 2019
CALL FOR ENTRIES - PRIZES AND AWARDS

SWAc

SOUTH WEST ACADEMY

Patron: Baroness Floella Benjamin OBE DL

The South West Academy of Fine & Applied Arts invites all local, national and international fine and applied artists to enter the 2019 Open Exhibition to be held at Exeter Castle, Devon, UK.

The Selection Panel will be looking for a diversity of styles and techniques and this year there will be a dedicated exhibition space for 3D work: sculptures and installations.

The Guest Artist for 2019 is nationally and internationally acclaimed sculptor Peter Randall-Page.

Enter online via www.southwestacademy.org.uk



'THE MAPPING OF MEMORY NO. 4'

ANNIE WARD

"New paintings by Dorset artist Annie Ward, based on her own drawings of Dorset field margins interwoven with details gleaned from historic maps and contemporary satellite photographs. Annie works intuitively, constantly revising shapes and lines, but allowing the final painting to bear the scars of its evolution."

12 - 23 October: The Gallery, Symondsbury Estate, SYMONDSBURY, near Bridport, DT6 6HG. 10.30am - 4.30pm. 01308 301326 / lynebayarts.co.uk.

ANDREW BIRD: 'IMAGE, IMAGINATION AND EXPERIENCE'

14 September - 11 October
Clifton Contemporary Art, 25 Portland Street, Clifton, BRISTOL, BS8 4JB. Tuesday - Saturday 10am - 5pm. 0117 317 9713 / cliftoncontemporaryart.co.uk. "A selection of layered, dynamic abstracts by Andrew Bird, inspired by both the bustle of coastal life and the natural ruggedness of Cornwall and Derbyshire."

LAURENCE EDWARDS: 'A GATHERING OF UNCERTAINTIES'

14 September - 20 October
Messums Wiltshire, Place Farm, Court Street, TISBURY, SP3 6LW. Wednesday - Saturday 10am - 5pm, Sunday 11am - 4pm. messumswiltshire.com. "In this exhibition of large sculptures, Laurence Edwards seeks to leave a record in which others might imagine or find a maker and excavate subconscious acts, which might lay under the surface, in these turbulent times."

'WELL TRODDEN WRONG WAYS'

14 September - 26 October
Thelma Hulbert Gallery, Elmfield House, Dowell Street, HONITON, EX14 1LX. Tuesday - Saturday 10am - 5pm. 01404 45006 / thelmahulbert.com. "Photographer Paul Blakemore and artist Jo Lathwood have been documenting the cultural, social and geological landscape of East Devon's Jurassic coast."

SOCIETY FOR DISABLED ARTISTS

19 September - 28 October
Meeting Room, Wells and Mendip Museum, Cathedral Green, WELLS, BA5 2UE. Monday - Saturday 10am - 5pm. 01749 673334.

NEWTON POPPLEFORD ART SOCIETY

20 - 29 September
Kennaway House, Coburg Road, SIDMOUTH, EX10 8NG. 10am - 4.30pm. kennawayhouse.org.uk.



MA DEGREE SHOW

20 - 25 September
Schools of Art and Design, Bath Spa University, Sion Hill Campus, BATH, BA1 5SF. Friday 6 - 9pm, Saturday - Tuesday 10am - 5pm, Wednesday 10am - 9pm. 01225 875875. "Inspiring exhibition by MA contemporary artists and designers at Bath Spa Schools of Art and Design." Above: Vicky McKay 'Three Stories, Two Burnings'

EXETER CONTEMPORARY OPEN

20 September - 10 November
Exeter Phoenix, EXETER, EX4 3LS. 10am - 5pm. 01392 667080 / exetercontemporaryopen.com. "An exhibition of emerging and established contemporary visual artists from across the UK. Established in 2006, Exeter Contemporary Open has come to be recognised as one of the UK's most prominent contemporary arts competitions."

PHILIPPA HEADLEY: 'COASTAL IMPRESSIONS'

20 September - 10 November
Tincleton Gallery, The Old School House, TINCLETON, near Dorchester, DT2 8QR. Friday - Monday 10am - 5pm. tincletongallery.com. "Philippa Headley is a full time independent artist driven by passion to produce"

AUTUMN AT

GALLERY ON THE SQUARE

August 30
to October 1

COLIN WILLEY

New landscape paintings



October 5
to November 12

ROB ADAMS

Five Years
in Dorset



Queen Mother Square, Poundbury, Dorchester DT1 3BL

Open daily, 9.30am to 5pm; Sundays 10am to 3pm

01305 213322

www.gallerypoundbury.co.uk

VISUAL ARTS



167 ANNUAL OPEN

"The RWA's renowned Annual Open Exhibition returns for its 167th year with a stunning variety of work from emerging and established artists. This dynamic and varied exhibition invites painting, drawing, printmaking, photography, sculpture, installation and mixed media submissions."

29 September - 1 December: Royal West of England Academy, Queen's Road, Clifton, BRISTOL, BS8 1PX. Tuesday - Saturday 10am - 5.30pm, Sunday 11am - 5pm. £7.95 / £6.95 / £6.75. 0117 973 5129 / rwa.org.uk.

expressionist oil paintings as a response to her surroundings. She is a regular exhibitor at Tincton Gallery and will be showing alongside a selection of other gallery artists."

'THE ART OF KINDNESS'

21 September

Castle Hill House, Bimport, SHAFESBURY, SP7 8AX. 11am - 4pm and 6.30 - 8pm. 07766 223498.

"Artworks by professional and amateur artists, supporting the work of the Friends of North Dorset Women's Refuge. Silent auction and evening auction of 10 works selected by professional panel."

'YOUR ART HERE 3'

21 September - 6 October

ACE Arts, Market Place, SOMERTON, TA11 7NB. Tuesday - Saturday 10am - 5pm. 01458 273008 / acearts.co.uk.

"Our annual exhibition and chance to purchase postcard sized original artworks which have been made by artists, professional and amateur, who have kindly donated them to help fund our community outreach."

'DESIRE, LOVE, IDENTITY:

EXPLORING LGBTQ HISTORIES'

21 September - 17 November

Shire Hall Historic Courthouse Museum, High West Street, DORCHESTER, DT1 1UY. 10am - 5pm. £9.50 / £5. 01305 261849 / shirehalldorset.org. "This British Museum touring exhibition offers glimpses into LGBTQ experience throughout history using the British Museum's collection."

RICHARD ADAMS: 'RHYME OR REASON'

24 September - 12 October

Hybrid Gallery, 51 High Street, HONITON, EX14 1PW. Tuesday - Saturday 10am - 5pm. 01404 43201 / hybrid-devon.co.uk. "Referencing an earlier age of simple pleasures, Adams paintings are romantic in essence. Their complexity and detail demand you take time to look and escape to a slower rhythm."

'PLAYING THE PICTURESQUE'

24 September - 14 December

Andrew Brownsword Gallery, The Edge, University of Bath, Claverton Down, BATH, BA2 7AY. Tuesday - Saturday 11am - 5pm. edgearts.org. "Step into the gallery and experience an interactive installation, exploring the boundaries between virtual and physical space. Using video game technology, the exhibition explores architectural designs showcasing historical landmarks."

'HOLDING SPACE'

25 - 28 September

Walcot Chapel Gallery, Walcot Gate, off Walcot Street, BATH, BA1 5UG. 10am - 6pm. 07885 269576. "Ten individuals from different backgrounds, having experienced the beneficial effects of the 'holding space' as a process within the Art Therapy Foundation Course at Bath College, were inspired to create a holding space for others. By sharing their stories they hope to create a platform for others to experience some of the benefits that Art can bring at a therapeutic level."



'WATERLINE'

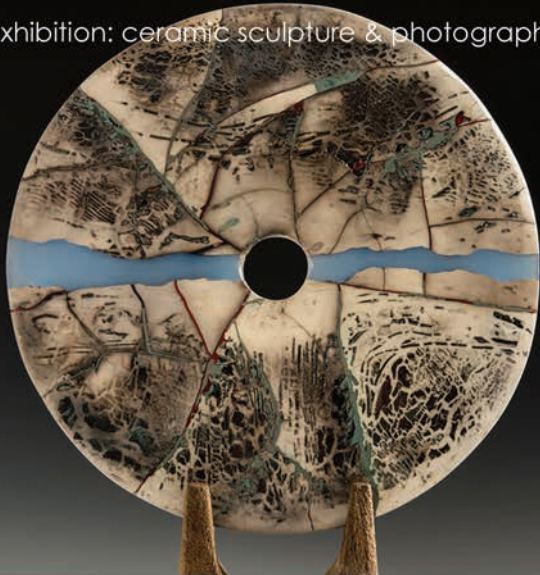
27 September - 9 October

The Gallery, Symondsbur Estate, SYMONDSBURY, near Bridport, DT6 6HG. 10.30am - 4.30pm. lynebayarts.co.uk. "Photographers Lois Wakeman and Tricia Scott share an uncannily similar view of the world seen here in intriguing patterns and imaginary scenes suggested by close-ups of boat hulls."

JOHN LEACH GALLERY

PETER HAYES & BENEDICT LEACH

exhibition: ceramic sculpture & photography



10 August - 29 October 2019

Gallery open: Tuesday - Saturday, 10-1, 2-4

Muchelney, Nr Langport TA10 0DW

www.johnleachpottery.co.uk



Creative Art

NEW courses, tutors, evening classes, talks and films
Free weekly wellbeing groups:
Parkinson's Dance, Art for Memory, Art for Parents
www.sherborneartslink.org.uk
01935 815899

Sherborne ArtsLink Ltd Co no 2471382 Charity no 1007680
Funded by Dorset Council and National Lottery Community Fund



Open Studios in North West Wiltshire

5 - 13 October 2019

The Peacock Arts Trail celebrates the arts in Corsham and the surrounding towns and villages in North-West Wiltshire. The Trail provides 9 days of open studios and exhibitions, giving you the opportunity to meet the artists, see their work and discover new art forms. With over 85 artists exhibiting their work across 46 venues, plus the opportunity to get hands-on in a variety of workshops, there is plenty to see and do! Free entry to all venues.



www.peacockartstrail.co.uk



Chris Wilmshurst

'A Celebration of Colour'

Saturday 7 to Sunday 22 September

WALFORD MILL CRAFTS

Knobcrook Road, Wimborne, Dorset BH21 1NL

Tuesday - Saturday 10am - 5pm, Sunday 11am - 4pm,
closed Mondays

01202 841400 • www.walfordmillcrafts.co.uk

Chris is a Wimborne based artist who uses collage and mixed media to depict local scenes full of individuality and vibrant colour



Call to Artists
within 15 miles of Poole to enter the:
Upton Country Park
OPEN 2019

The Gallery Upstairs
Upton Country Park

Drawing, painting, sculpture.
Cash prizes. Hand-in day 27 Nov
For info: gus@pedas.org.uk
www.pedas.org.uk

Pedestrian

Noun: a person walking along the road or in a built up area

Adjective: lacking inspiration or excitement

Oxford English Dictionary

Paintings, etchings, frescoes and drawings showcasing a two year collaborative urban outings project by artists Fiona Bradford and Nikki Taylor

11 October - 30 November

Brewhouse Theatre & Arts Centre

Coal Orchard, Taunton TA1 1JL

01823 283244 / www.thebrewhouse.net

Mon - Fri 9.30am - 4.30pm, Sat 12noon - 4.30pm
(Closed Sundays)

Private view

Saturday 12 October, 4 -8pm



VISUAL ARTS



'WHITE HORSE'

RUTH ANDER: OPEN STUDIO

"Ruth will be opening her studio for one weekend only this September to show mono-prints, etchings and cyanotypes as well as demonstrate her low-tech hand-printing technique. There will be work made during her scholarship to the University of the West of England and recent residency at Lizard Point in Cornwall as well as her trademark ethereal one-off monoprints of Dorset and the South West's coast and landscape. A great chance to see an artist at work and view art in relaxed surroundings."

20 - 22 September: The Studio, 2 The Square, PUDDLETOWN, near Dorchester, DT2 8SL. Friday 12noon - 5pm, Saturday 4.30 - 6.30pm, Sunday 11am - 4pm. 07816 766894 / ruthander.co.uk.

BATH ARTISTS' STUDIOS OPEN STUDIOS WEEKEND

28 and 29 September

Bath Artists' Studios, The Old Malthouse, Comfortable Place, Upper Bristol Road, BATH, BA1 3AJ. 11am - 5pm. 01225 482480 / bathartistsstudios.co.uk. "Come and explore the largest single community of artists and makers in Bath! Within these walls you will find a treasure trove of over fifty painters, ceramicists, sculptors, printmakers, photographers, and jewellers."

EXMOUTH COMMUNITY COLLEGE

30 September - 4 October

Kennaway House, Coburg Road, SIDMOUTH, EX10 8NG. 10am - 4.30pm. 07717 810460 / kennawayhouse.org.uk. "Textiles and Graphics exhibition."

AVEBURY PROJECT EXHIBITION

30 September - 12 October

The Roper Gallery, Bath Artists' Studios, The Old Malthouse, Comfortable Place, Upper Bristol Road, BATH, BA1 3AJ. 12noon - 5pm. 01225 482480 / bathartistsstudios.co.uk.

KATHRYN D'ARCY: 'CHRISTMAS IS COMING'

1 - 31 October

Creative Gallery, St John's Hill, WAREHAM, BH20 4NB. 10am - 5pm. 01929 551700 / creativegallerywareham.co.uk. "Kathryn creates delightful range of cottages and Christmas decorations from laser cut wood - all to her own original designs."

YEOVIL CREATIVES

3 - 30 October

The Hub, 13 Buckland Road, Pen Mill Trading Estate, YEOVIL, BA21 5EA. Monday - Friday 9.30am - 4.30pm. eastvilleproject.org.uk.

'WINE GUMS AND MOONBEAMS'

4 - 6 October

Hours, 10 Colston Yard, Colston Street, BRISTOL, BS1 5BD. Friday 6 - 9pm, Saturday and Sunday 11am - 5pm. 07766 054659 / hours-space.com. "Abstract paintings by Nigel Shipley. Sublime deep black contrasts with thin, transparent, misty washes of paint."

PEDAS: 'THE JOY OF ART'

4 - 21 October

The Gallery Upstairs, Upton Country Park, POOLE, BH17 7BJ. 10am - 5pm. pedas.org.uk. "Drawings, paintings and sculpture in a range of different styles and media."

'ART ON THE HILL 2019'

5 and 6 October

Windmill Hill, BRISTOL, BS3. 11am - 5pm. artonthehill.org.uk. "Check out the talent! Artists in Bristol showcase their work from their very own homes. Admire, grab a bargain or stock up on one of a kind Christmas presents."

PEACOCK ARTS TRAIL

5 - 13 October

Locations in and around CORSHAM, BOX and CHIPPENHAM. peacockartstrail.co.uk. "Celebrating the wealth of creative talent in north west Wiltshire. Unexpected, beautiful, challenging, even amusing. Open studios, workshops, exhibitions and events. This emerging arts trail is one to discover."

VISUAL ARTS

'INTRODUCING TO YOU...'

5 October - 9 November

The Gallery, Lighthouse, 21 Kingland Road, POOLE, BH15 1UG. Tuesday - Saturday 10am - 9pm. 01202 280000. "Work by 2019 graduate students from Arts University Bournemouth BA (Hons) degree courses."

ROB ADAMS: 'FIVE YEARS IN DORSET'

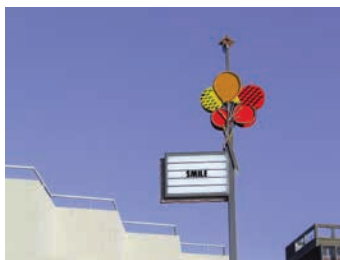
5 October - 12 November

Gallery On The Square, Queen Mother Square, DORCHESTER, DT1 3BL. 9.30am - 5pm, Sunday 11am - 4pm. gallerypoundbury.co.uk. "A new collection of Dorset landscapes by Rob Adams, who made his name as a member of London's Wapping Group."

'FIRE & THREAD'

7 - 12 October

Round Tower, Black Swan Arts, 2 Bridge Street, FROME, BA11 1BB. Monday - Saturday 10am - 4pm. 01373 472264 / blackswanarts.org.uk.



PARKSTONE CAMERA CLUB

7 - 18 October

Poole Central Library, Dolphin Centre, POOLE, BH15 1QE. Monday - Friday 9am - 6pm, Saturday 9am - 5pm. parkstonecameraclub.org.uk.

ALINA MAKSIMENKO

7 - 26 October

Axle Arts, Leighton Road, BATH, BA1 4NF. 01225 461230. Monday - Friday 10am - 12noon. axlearts.com. Paintings.

'MY LOCALITY'

7 - 26 October

Ilminster Arts Centre, The Meeting House, East Street, ILMINSTER, TA19 0AN. Monday - Friday 9.30am - 4.30pm, Saturday 9.30am - 2.30pm. themeetinghouse.org.uk. "Textile art."

'ART ON WAREHAM QUAY'

8 - 10 October

Italian Kitchen, South Street, WAREHAM, BH20 4LR. 11am - 5pm. 07889 247981. "Work by nine Purbeck artists, with food tasters from the Italian Kitchen's new winter menu."



MARIAN YOUNG



RICHARD WILSON



SUE JENKINS

BRIDPORT & WEST DORSET OPEN STUDIOS

Bridport & West Dorset Open Studios is an annual 9-day celebration of contemporary visual artists who live in Bridport and the surrounding countryside. Started by artist Caroline Ireland in 1999, the event has grown over the years to become a distinctive showcase for the thriving West Dorset art scene. Pick up a free 52 page event guide in August and explore the great wealth of talent in the towns, villages, and hamlets across West Dorset from Evershot to Marshwood and Abbotsbury to West Bay."

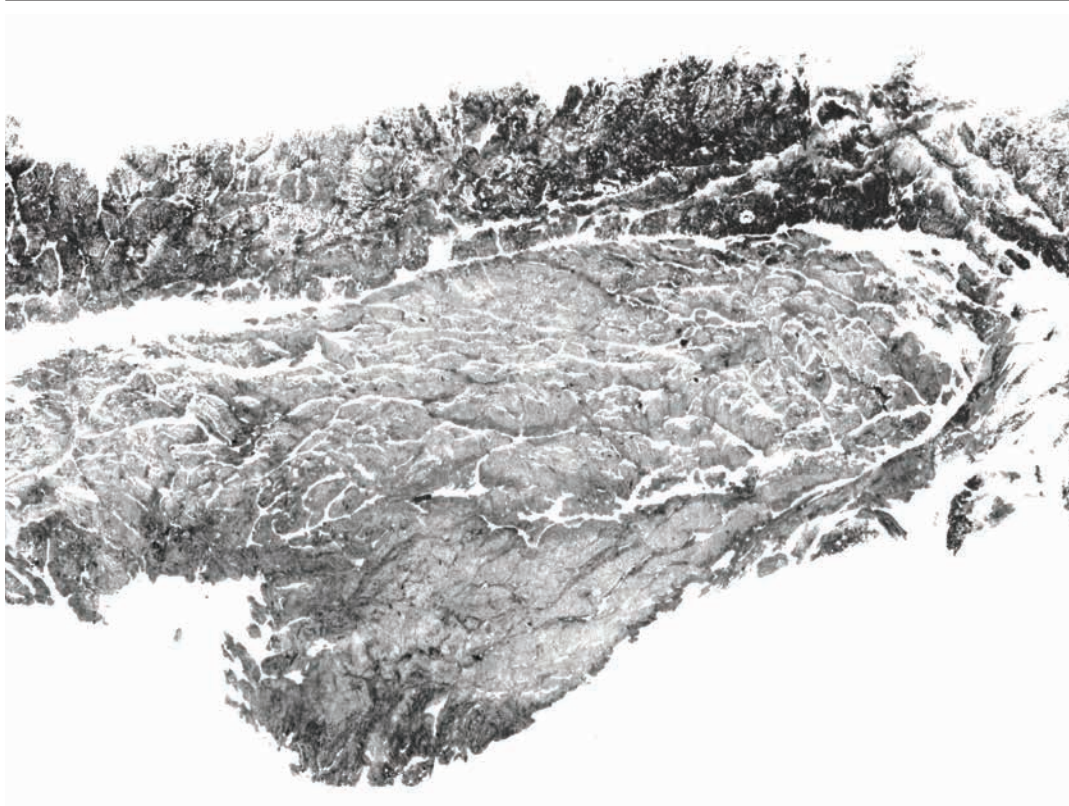
7 - 15 September: 50 venues across BRIDPORT and WEST DORSET. Monday - Sunday 10am - 5pm. bridportopenstudios.co.uk.



Showcasing contemporary craft and art alongside an inspiring exhibition programme of work by local and national artists



Market Place, Somerton, Somerset TA11 7LX • 01458 273008 • www.acearts.co.uk



FRAN NORTON 'DORSET 1' (Relief print, locally sourced meat and ink, 105 x 148 mm, 2019)

DRAWING ON DORSET

"Dorset Visual Arts, in partnership with Evolver magazine, are celebrating the launch of *Drawing on Dorset*, a book featuring 36 selected drawings, with a series of exhibitions featuring the original drawings. The selection was made from work submitted following an open call to survey current themes, trends and innovations on drawing practices. It spans the figurative, the abstract and both physical and digital drawings made in Dorset, of Dorset and about Dorset."

7 - 28 September: Lighthouse, 21 Kingland Road, POOLE, BH15 1UG. Tuesday - Saturday 10am - 9pm. 01202 280000 / lighthousepoole.co.uk.

12 October - 3 November: The Slade Centre, The Square, GILLINGHAM, SP8 4AY. Wednesday - Sunday 10.30am - 5pm. 0777 5431652 / sladecentre.com.

dorsetvisualarts.org

'COASTLINE'

9 - 22 October

Shaftesbury Arts Centre, Bell Street, SHAFTESBURY, SP7 8AR. 10am - 4pm. shaftesburyartscentre.org.uk. "A response in paint, print, ceramics, wood and metal by Laura Jolliffe, exploring the interactions of land-sea-sky and the qualities of water and rock formations along the Dorset coast."

THE SHAFTESBURY GROUP

11 October

Shaftesbury Town Hall, 21 High Street SHAFTESBURY, SP7 8LY. 10am - 4pm. 01747 853822. See 6 September.

AVALON EMBROIDERERS: 'SEA, SHORE AND MORE'

12 - 19 October

Wells Museum, 8 Cathedral Green, WELLS, BA5 2UE. Monday - Saturday 10am - 4pm. 01458 851439.

'REWILD'

12 October - 9 November

ACE Arts, Market Place, SOMERTON, TA11 7NB. Tuesday - Saturday 10am - 5pm. 01458 273008 / acearts.co.uk.

TRINITY BUOY WHARF DRAWING PRIZE 2019

12 October - 11 January

The Salisbury Museum, The Kings House, 65 The Close, SALISBURY, SP1 2EN. Monday - Saturday 10am - 5pm. £8 / £4. salisburymuseum.org.uk. "The Trinity Buoy Wharf Drawing Prize, formerly the Jerwood Drawing Prize, is the largest and longest-running annual open exhibition for drawing in the UK. Selected from original drawings, the exhibition has established a reputation for its commitment to championing excellence and promoting, celebrating and challenging contemporary drawing practice. This open exhibition is a platform for drawing practitioners to showcase their work alongside other leading contemporary artists and makers in the field. The 2019 exhibition is made up of a diverse selection of work which explores the nature, role and value of drawing in creative practice today."

MOIRA EVE

14 - 19 October

Round Tower, Black Swan Arts, 2 Bridge Street, FROME, BA11 1BB. Monday - Saturday 10am - 4pm. 01373 472264 / blackswanarts.org.uk.



KATE EVANS: 'OPEN / WILD'

16 October - 16 November

Kobi & Teal, 57 Catherine Street, FROME, BA11 1DA. Tuesday - Saturday 10am - 4.30pm. kobiandteal.co.uk. "New collection of paintings and mono prints inspired by recent travels to Vietnam and Canada, exploring both the tropical and boreal wild."

GEORGE HUTCHINSON AND FAVELL BEVAN-ART

17 - 27 October

Kennaway House, Coburg Road, SIDMOUTH, EX10 8NG. 10am - 4.30pm. kennawayhouse.org.uk.

PULL-OUT SUPPLEMENT

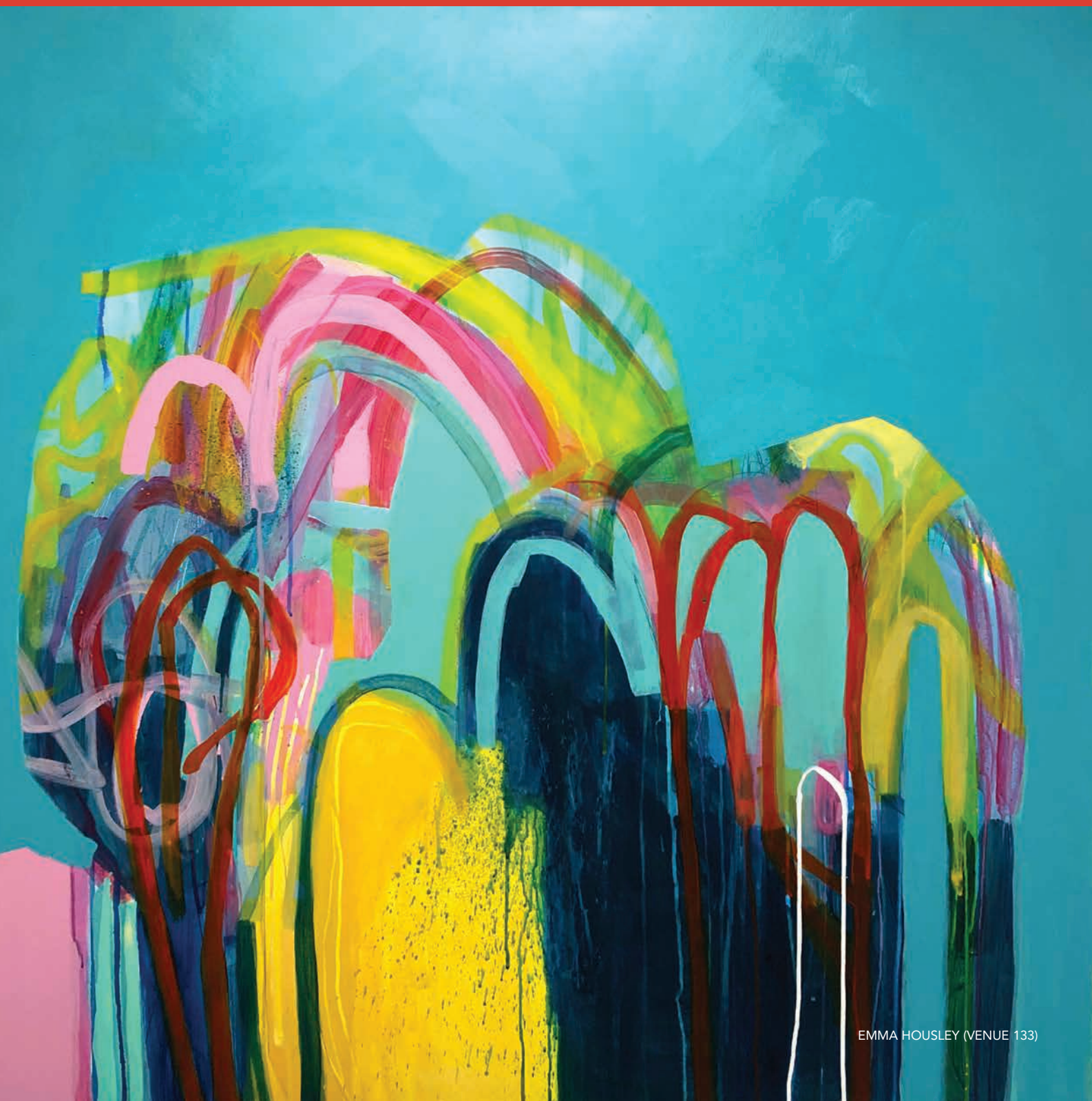
**BRIDPORT &
WEST DORSET
OPEN STUDIOS**

bridportopenstudios.co.uk

**7-15
SEPTEMBER
2019**

**80 ARTISTS
50 VENUES**

SOMERSET ART WEEKS 2019



EMMA HOUSLEY (VENUE 133)



PINE FERODA (VENUE 1)

As the heat of the summer subsides and autumn approaches, artists in Somerset prepare to share their work with the public. Somerset Art Weeks is in its twenty-fifth year. The Brewhouse in Taunton (Venue 25) is celebrating this anniversary with *Reflect: 25 Years of Somerset Art Weeks*, featuring twenty five artists, each showing a piece of work accompanied by a short statement detailing the significance of SAW to their practice.

Ros Marchant was involved in SAW at the beginning as a part-time freelance arts officer. She came from an art history and museum background although she has since become a printmaker and etcher. Her brief was to give artists a platform to encourage them to get their work seen and to encourage the public to support them by buying work. As Bronwen Bradshaw recalls they were extraordinary times. Many of the artists didn't know anyone else locally making art and these connections created a network of support. SAW has developed from the intimacy of those initial contacts into a large organisation involving many artists across the county. It funds projects and provides supportive bursaries. It connects

artists with visitors who would not usually go to art galleries as well as involving venues not known for showing artwork: shops, schools, even prisons. This year it is extending its remit beyond enclosed spaces, into the landscape and into the ether through radio.

As a Festival year the focus for 2019 is on group exhibitions, events and showcase projects rather than individual studio spaces. It promotes artists working together so it seems appropriate to start this overview of SAW with a collaborative artist. This might seem a strange way of describing Pine Feroda, but as an initiative set up five years ago between initially five and now three artists, Pine has taken on a persona in its own right. The artists have worked together on large-scale woodcuts each contributing their particular strength and learning new skills, from diffuse rolling, (allowing ink to fade to the edges of the work), to how to sharpen their wood-cutting tools. It has been a fascinating experiment, incredibly intensive for the artists working and living alongside each other for a week at a time in order to produce a collaborative print.

A retrospective of Pine Feroda's work (Venue 1) will sit alongside work by individual members of the group. The exhibition includes Merlyn Chesterman's strong black and white wood-block prints, Ian Phillips' lino cuts inspired by the Japanese artist Hiroshige, Judith Westcott's prints revealing her obsession with the sea, and woodcuts by colourist Julia Manning responding to the natural world. Manning immerses herself in the isolation of Skokholm Island off Pembrokeshire on a regular basis, drawing birds and landscape, and Pine Feroda prints themselves were often the result of group sketching events, some of the artists even venturing into the sea with their sketchbooks.

For those who love paper, a delight not to be missed is a visit to the Two Rivers Paper Mill (Venue 11), where you can watch demonstrations of paper-making and the special processes that Two Rivers uses to produce their beautiful NOT surface paper. You will gain a fascinating insight into all stages of the process from the very informative Neil Hopkins.



Scissors Rock Paper

VENUE
102

**WARREN LEAVENS
SHEENA SPACEY
CHRIS LEE**

A2GALLERY

80 High St Wells Somerset



SOMERSET ART WEEKS



TWO RIVERS PAPER MILL (VENUE 11)



SUKI CHAN (VENUE 131)

Landscape is always a strong SAW theme given the rural nature of many of the locations. At Fyne Court (Venue 135) the Arborealists and guests include Paul Newman's detailed pencil drawings of trees, prints by master etcher Howard Phipps, Sarah Gillespie's exquisite images of moths and landscape and David Parfitt's beautiful water-colours.

Moving away from more traditional approaches, Somerset Film (Venue 131) is showing *Memory*, a commissioned film by London based Suki Chan. It is the first chapter of a multi-platform project investigating consciousness. Alongside her enigmatic images the soundtrack captures the poignant recollections of RAF pilots' experience of flying. Marcus Coates, a performance artist writer and filmmaker is leading *Ask Somerset's Plants*, a participatory sound work also available on BBC Somerset and as podcast downloads. Marcus will be inviting people to ask questions about anything and then take them to ecological sites and use what is there to interpret answers to those questions. There will be a walk in Bridgwater on 21st September, see details on askthewild.net/asp/

On the outskirts of Bridgwater down a narrow high-hedged lane is a beautifully designed new centre, Clayhill Arts (Venue 133). Three bursary artists can be found here: abstract painter Emma Housley (see page 9 in this supplement), Meghan Wakelam who works figuratively with landscape and Pennie Elfick. Known for her exquisite use of layered colour. Pennie has launched into 3D in the last couple years and her latest experimental maquettes in steel are a fascinating development.

In Frome, beautiful ceramics by Hiro Takahashi and Russell Coates are on show at Gare Hill Road Pottery (Venue 83). Eighteen ceramicists are showing work in *Claymakers* at Kobi and Teal (Venue 80). The work ranges from Emma Lacey's delightful dimpled mugs and Lisa Ommanney's tactile unglazed rough-edged domestic ware, to brightly coloured and highly finished ornate curlique pieces. References to architecture are evident in Amanda Sue Rope's elegant forms and in Natascha Madeiski's work. An architect, Natascha was attracted by the fragility of the materials and processes involved in ceramics. Her intriguing lidded porcelain and

brass lidded pots are innovative and very beautiful. At Somerset Rural Life Museum in Glastonbury (Venue 114,) recipient of the SAW Craft Residency, Emilie Taylor has been making ceramics in response to the museum collections. She contextualises the vessels that she makes in terms of containment relating them to community life, exploring ideas around food production and the distribution of wealth.

There are a number of studio complexes showing work by large numbers of artists. At Bath Artists' Studios (Venue 75) there are 54 studios and 62 artists. In contrast Shave Farm Studios (Venue 73) is home to just six painters and printmakers who will be showing contemporary responses to the sea, the landscape and the figure. At Dove Studios (Venue 108) prints, installations, textiles and more by nine artist are on show both inside and outside in the landscape. One of the highlights is the Tree House Library with specially commissioned artists' books. Prints made here in the etching studio by the Fingerprint group will be on show at ACE Arts, Somerton (Venue 47).

THE ENGLISH WOMAN'S Flora
by Fiona Hingston

7 Sep - 6 Oct 2019
Preview: Friday 6 Sep 6-8pm

galleries | studios | shop | cafe
2 Bridge Street, Frome BA11 1BB
01373 473980 | www.blackswanarts.org.uk

BLACKSWAN GUILD
QUALITY • ORIGINALITY • MASTERY

PREVIEW FRI 6 SEP 6-8PM

BODY:art
7 Sep - 6 Oct 2019

OPEN: Mon - Sat 10am-4pm
and Independent Market Sundays
Registered Charity No. 292463



ALARDUS VAN DEN BOSCH WOOD INLAY

Venue 89: Sunnyside, East Pennard, BA4 6TU

Thursday - Sunday 10am - 5pm • 01749 860450 • alardus.co.uk

Showing alongside Pete Reay and Giles Simmons

Sylva Venue 14

Leo Davey, Jane Hood, Lucy Lean,
Martyn Lintern, Sue Lowe & Lyn Mowat



OPEN DAILY
10am to 5pm

An Exhibition Celebrating the Forests of the Quantocks & Exmoor

21 Sept to 6 Oct 2019

Halsway Manor, Halsway Lane,
Near Crowcombe, TA4 4BD



charlynn lane . bridgwater . ta5 2ph www.clayhillarts.co.uk



SAW '19

Venue 53

Liz Somerville
Emily Myers

Unit One, Crewkerne
TA18 7HN



FAMILY FRIENDLY WEEKEND 5 + 6 OCTOBER



The final weekend of Somerset Art Weeks Festival extends a special welcome to families, with venues across the county offering workshops, demonstrations, have-a-go activities and events.

See SAW Guide and somerseartworks.org.uk/family

THE BIG DRAW, DRAWN TO LIFE: CREATIVITY AND WELLBEING 5 October

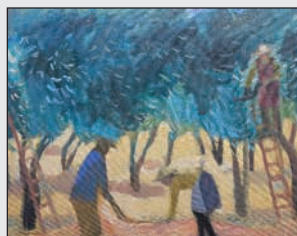
Join Somerset Art Works, Mind in Somerset and artist Megan Players for a Big Draw Workshop - all ages welcome. Gardens, real or imaginary, are a refuge from the hustle and bustle and stresses of daily life. Working in collage, ink and paint, you are invited to experiment with materials to create a colourful, collaborative garden.

Quaker Meeting House: 9 Banks Street, MINEHEAD, TA24 5DJ.
2 - 4pm. Free. No booking required. info@somerseartworks.org.uk.

SAW
project

THE 2019
BIG DRAW
FESTIVAL

Mind
in Somerset



VENUE 20

WORD AND IMAGE

Enigma, Butts Way, Milverton, TA4 1LY
21 September - 6 October, 10am - 5pm

01823 401167 / louisewaugh.com

Louise Waugh: Contemporary figurative, narrative paintings in oil and acrylic, original prints and cards. An artist and traveller she shares her view in recent and new work. **Rachel Gundry:** Stone letter carvings to contemplate.



ASK SOMERSET'S PLANTS FERAL PRACTICE & MARCUS COATES

A new sound art work using Somerset plant knowledge to address human problems and dilemmas.

The audio journeys will be broadcast on BBC Somerset during the Art Weeks Festival, and can be downloaded as podcasts at askthewild.net/asp from 21 September.

WALK & TALK WITH THE ARTISTS

Saturday 21 September, Bridgwater Library, 11 - 1pm

Booking essential: info@somerseartworks.org.uk / 01458 253800

Commission for Somerset Art Weeks Festival 2019, funded by Arts Council England



BBC SOMERSET
95.5 FM | 1566 AM | Digital

SCW
somerse
art works



Arts Council
ENGLAND

SOMERSET ART WEEKS

Continuing the literary theme, on Exmoor www.NumberSevenDulverton.co.uk exploits the connection between art and nature. A poem by Chris Jelly, poet in residence, will be shown scrolling down a screen on repeat and there will be family friendly activities out in the woods.

Close House (Venue 35) is showing work by Turner Prize winner Grenville Davey with Magnus Hammick and Anna Mossman. In their project space SAW Creative Pathways artist in residence Amanda Lynch will be showing work which deals with materialism and media. Andelli Art (Venue 99) has reunited four artists who studied together in the sixties. Painters Susanna Lisle and Robin Sewell are joined by sculptor Kathy Dalwood, who makes plastercasts direct from objects, often referencing architectural detail. The fourth artist is Peter Webster, whose work is closely related to language. Crossing the boundaries of painting 3D and drawing, he recreates conversations between diverse visual sources, sometimes taking cardboard structures through into drawing and paint.

The collaborative nature of many of the projects on show is revealed by the wide ranging funding support SAW attracts. Ranging from Arts Council England to Somerset Film, the RSPB and Natural England to name just a few. It reveals the ongoing collaborative nature of how producing art is supported and an acknowledgment of its importance in everyday life.

Fiona Robinson



SOMERSET ART WEEKS 2019
21 September - 6 October: 135 venues
 throughout SOMERSET.

somersetartworks.org.uk



NATASCHA MADEISKI (VENUE 80)



FIONA HINGSTON (VENUE 108)



PENNIE ELFICK (VENUE 133)

Somerset Art Weeks Festival 2019

21 September - 6 October : Open Daily 10am - 5pm

VENUE NUMBER 31

The Old Brick Workshop's Member Artists and Invited Guest Artists will be showing a mixed exhibition of their work in the fabulous gallery and throughout the whole building. Coffee and cake available in the pop up coffee bar.

www.theoldbrickworkshop.com



The Old Brick Workshop, Higher Poole, Wellington, Somerset, TA21 9HW : 07989 465427 : alison@theoldbrickworkshop.com

SAW
somer
set art
works

THE VENUES

The venues are divided into 5 areas:

WEST SOMERSET: VENUES 1 - 17

TAUNTON DEANE: VENUES 18 - 35

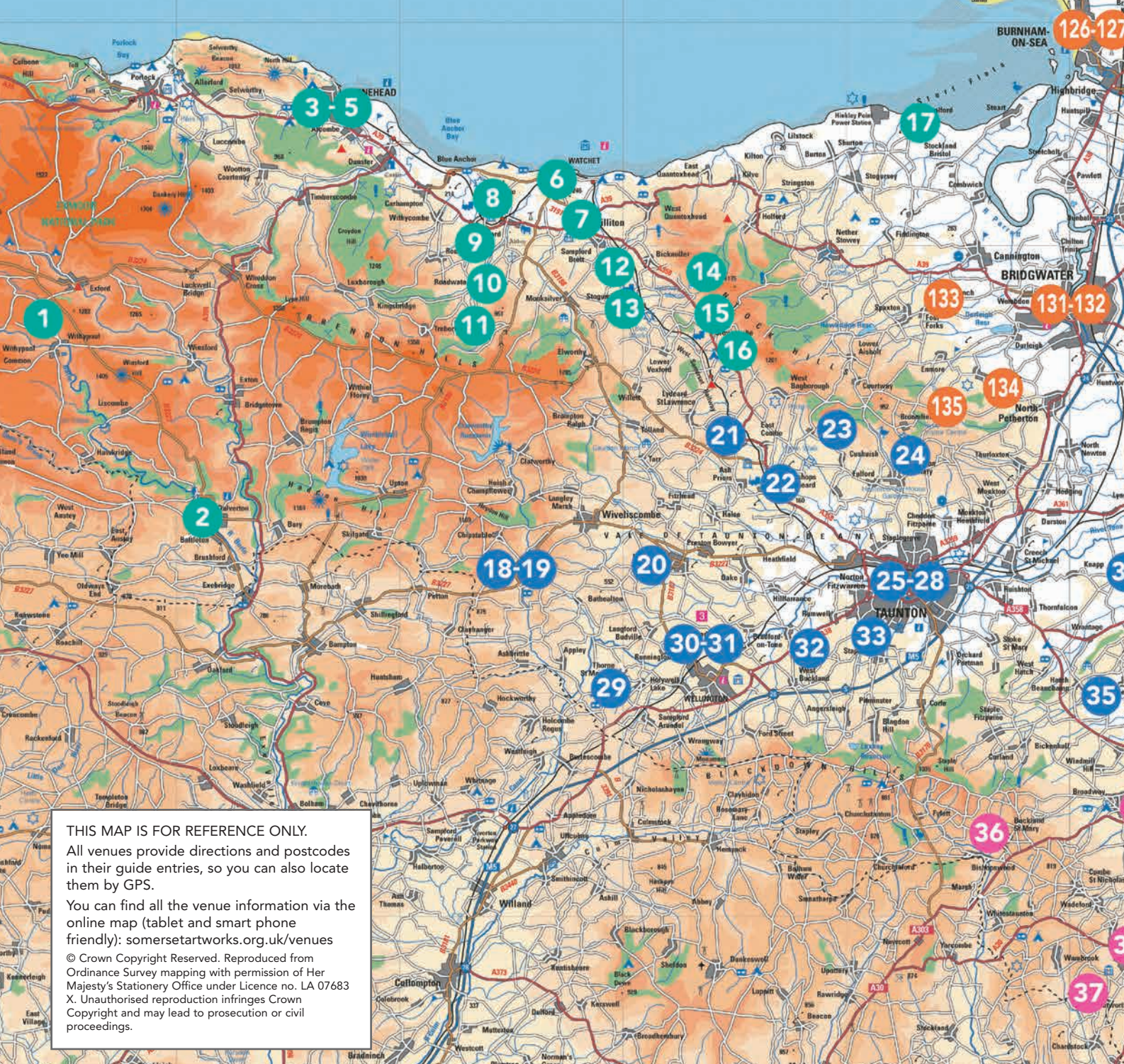
SOUTH SOMERSET: VENUES 36 - 73

BATH: VENUES 74 - 76

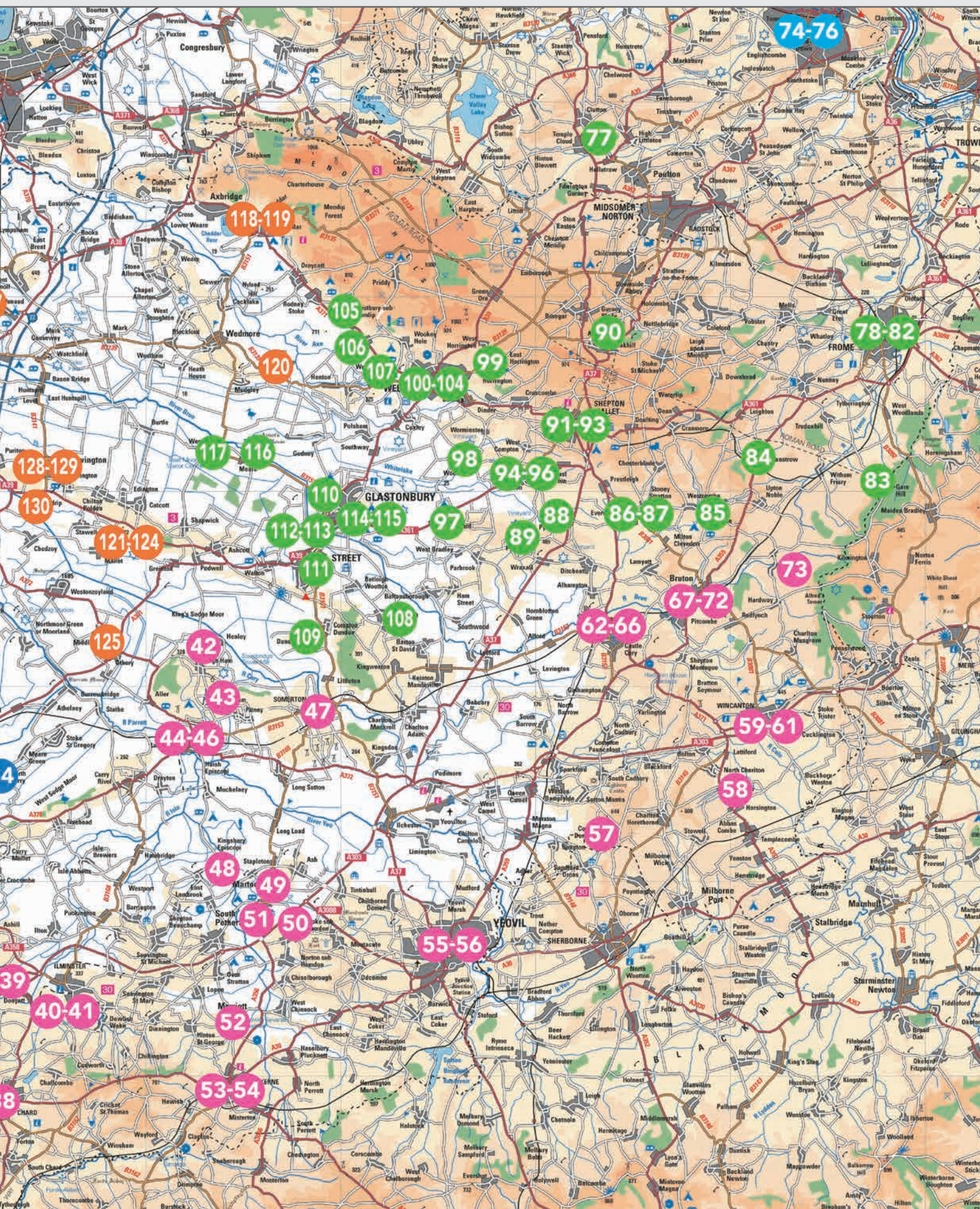
MENDIP: VENUES 77 - 117

SEDGEMOOR: VENUES 118 - 135

21 SEPTEMBER – 6 OCTOBER



SOMERSET ART



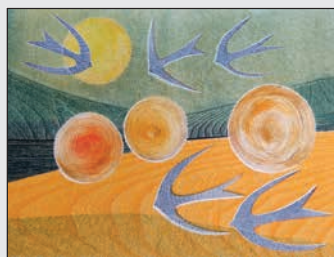
SOMERSET ART WEEKS 2019



SOMERSET ART WEEKS 2019 **VENUE 107**

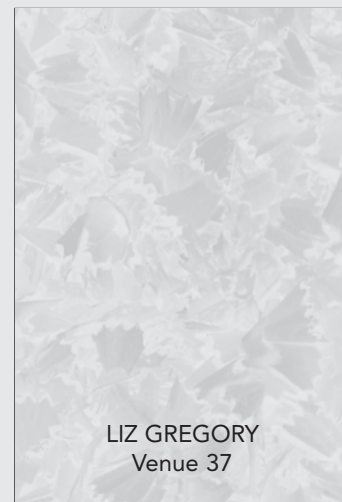
Myrtle & Jason Pizzey

Hill Farm, Castle Lane, Wookey, near Wells, BA5 1NN
21 September - 6 October
Open weekends plus Thursdays and Fridays, 10am - 5pm
01749 678006 • myrtlepizzey@icloud.com
myrtlepizzey.co.uk



JACKIE CURTIS '5 BY 5'

PRINTMAKING
Venue 130: 2 Greenfield Lane,
Bawdrip, TA7 8PX
01278 685911 • jcurtisart.com
9.30am - 5.30pm and other
times by appointment



LIZ GREGORY
Venue 37

The Millhouse Gallery contemporary artspace in Somerset

Unit 1, Rose Mills Industrial Estate, Hort Bridge, Ilminster TA19 9PS
01460 52866

Somerset Art Weeks Festival - venue 40

paintings, food, photography, books, bric a brac, knittery, drawing

SUBSCRIBE TO EVOLVER ONLINE

evolver.org.uk

**CLAYHILL
ARTS**

**21 SEPTEMBER
- 6 OCTOBER**

**EMMA HOUSLEY
PENNIE ELFICK
MEGAN WAKELAM**

Somerset Art Weeks Festival 2019
Venue 133



www.clayhillarts.co.uk
Charlynch Lane, Bridgwater ta5 2ph



ROCKAWAY PARK

Set in a disused quarry on the top of Cloud Hill, Rockaway defies description. We house artists, works of art and supply materials and inspiration to many more. Along with site owner Mark Wilson's huge, sprawling onsite collection of artwork, there will be an eclectic mix of visiting and resident artists exhibiting their work. Our onsite vegan café, The Green Room, will be open throughout. See our website and Facebook page for updates about events and artists as we announce them - or join our mailing list for regular updates!

Preview:

Friday 20 September, 6 - 11pm, with The Cravats plus guests

Open days:

Saturday 21 September, 12noon - 11pm with Reverend Schneider and the Band of Angels 8 - 11pm

Sunday 22 September, 12noon - 6pm with live music

Thursday 26 - Sunday 29 September, 12noon - 6pm

Thursday 3 October - Sunday 6 October, 12noon - 6pm

Venue 77: Rockaway, Eastcourt Road, Temple Cloud, BS39 5BU

01761 452177 • getinvolved@rockawaypark.co.uk
rockawaypark.co.uk • facebook.com/rockawaypark.co.uk

EMMA HOUSLEY

'O for a beaker full of the warm South'.

The first line of John Keats' *Ode to a Nightingale* came to mind when I first saw Emma Housley's riotous turquoises and pink flood the canvas anchored by fluorescent marks drawn with luminous gel pens borrowed from her children. Layered and scraped off, the paint is pushed across the surface with a passion that contributes to their intense physicality. 'The warm south' seems to have infiltrated her painting with dramatic effect.

The searing heat emanating off her canvases, hence the Keats quote, owes much to her year in Cyprus studying fine art. She still dreams of that carefree time in the hot sun. The experience of 'wild swimming' in an emerald sea seeps into her work in the expressiveness of the clear untroubled blues. She focuses on direct personal experiences, searching for a way to translate the pure animal sensation of being in the water into paint. This idea is pushed further in the way that she uses thin washes of ink, capitalising on the gravity that causes the falling pigment to run down the surface of the support. She feels that 'things being grounded and pulled down [feed] into some kind of reality'.

Although Housley identifies as an abstract painter she acknowledges that occasional landscape elements appear unbidden. Arches or 'open circles' as she describes them 'hold the colour really well', and also suggest the curves of the body and the female roundedness of hilly landscapes.

In purely formal terms, she loves using pink because it complements the turquoises and sky referencing blues. Pink, a colour she would never wear, gives a political slant to what she does and she is determined 'to reclaim it' from the girlyness of many of the products marketed for and aimed at young girls. The politics of our current dysfunctional world intrude on her peace of mind and part of her anger about what is happening in the news emerges on the canvas. These subconscious concerns often only become apparent in retrospect.

Listening to music whilst she is working: House Music or perhaps Bach, she responds to the beat, the sense of rhythm, which allows her to immerse herself in her response to her painting, shutting out everything else and concentrating on the physicality of her process.



'BOLDNESS' (60 x 60 cm)

Jenny Saville and Gerhard Richter are two artists that Housley cites as influential, not for their subject matter, which is ostensibly figurative, but for the intensity of their engagement with their process and their sense of movement and freedom. Matisse too, again figurative, is another source but for his colour. Her current reading is Simone de Beauvoir and she is obsessed by post-war Parisian artistic life and the fearless freedom with which Sartre and De Beauvoir and their contemporaries lived their lives. The sense of freedom and risk-taking is very evident in her work.

Housley's explosion of recent activity has had a long incubation. She read English at university followed by her masters in Cyprus a couple of years later. Returning to painting after a long fallow period whilst other life experiences vied for her

attention, she feels 'a sense of urgency'. She is currently supported by a SAW Creative Pathways bursary, which provides a wonderful studio space at Clayhill Arts in Bridgwater. This is enabling her to continue that sense of adventure and discovery, which began in Cyprus.

Despite their apparent carefreeness Emma Housley's paintings are deeply felt. Rarely making preparatory drawings, she prefers to launch herself at breakneck speed at the canvas. An initial layer of pigment is laid down in order to neutralise the white space, then shapes, brushstrokes, she thinks it is important to see the artist's process, and lines follow. As the painting develops it becomes a self-referential conversation between artist and work, responding to the marks, colours, erasures and repetitions that she sees in front of her. Almost performative, it is a 'guttural immediate response reaching to the last mark'.

Fiona Robinson

Venue 133: Clayhill Arts, Charlynch Lane, BRIDGWATER, TA5 2PH. Wednesday - Monday 11am - 5pm (Closed 23 and 24 September + 1 and 2 October). 01278 256596 / clayhillarts.co.uk.

emmahousleyartist.weebly.com



SOMERSET ART WEEKS



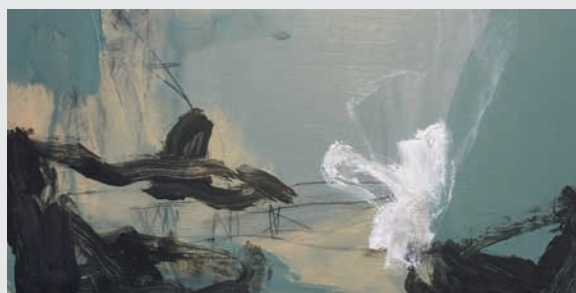
LOUISE WAUGH (VENUE 20)



DAVID PARFITT (VENUE 135)



MYRTLE PIZZEY (VENUES 107 + 135)



ANGELA CHARLES (VENUE 54)



BRONWEN BRADSHAW (VENUES 47 + 108)

SITE RESPONSIVE ARTWORKS SHEPTON MALLET PRISON




Exhibition Workshops Tours and Performances

Open Daily 10-5

21st September to 6th October

b-wing.weebly.com







VENUE 108

Dove Studios AMAZING SPACE III









Art inside and outside: Prints, pottery, handwoven textiles, artists' books, a moving painting, site specific artwork, a treehouse library, poetry performance with music, workshops

Dove Studios, Barton Road, Butleigh, BA6 8TL

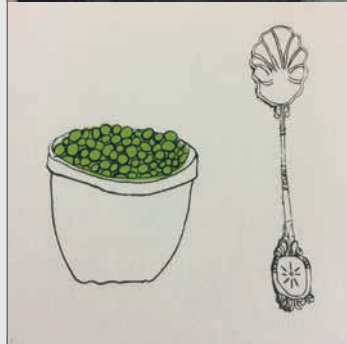
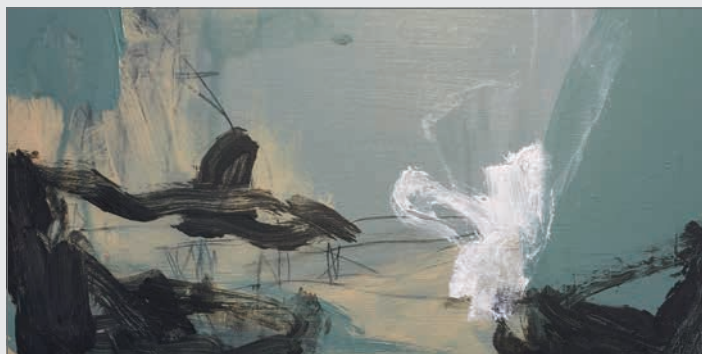
07905 644015 • bronbradshaw@yahoo.com

dovearts.wordpress.com

Venue 1
PINE FERODA
LANACRE BARN GALLERY
 Lanacre, Withypool, Exmoor TA24 7SD



21st Saturday September
 until Sunday 6th October
 Open daily 10am - 5pm
 For more information go to:
www.moorlandart.com



VENUE 54
ANGELA CHARLES AND GUESTS

Angela Charles is excited to be exhibiting her recent paintings alongside two outstanding artists, sculptor **Lawrence Dicks** and **Rachel Eardley** whose work encompasses drawing, printmaking, embroidery and jewellery.

The Tower House, Mount Pleasant, Crewkerne, TA18 7AH
 07747 100775 • mail@angelacharles.com • angelacharles.com
 Open Thursday - Sunday 11am - 5pm

Bocabar
 Award-winning ★ Independent



★ **BAR** ★ **KITCHEN** ★
 ★ **MUSIC** ★ **ART** ★
 ★ **GARDEN TERRACE** ★



www.glastonbury.bocabar.co.uk



The Red Brick Building, Morland Road, Glastonbury, Somerset BA6 9FT



VENUE 73
SHAVE FARM ARTISTS
South Brewham, Bruton, Somerset BA10 0LG
 Open Thursday - Sunday
 11am - 6pm
 + POP UP GALLERY CAFE



Rowena Pearce, Terri Hogan, Kay Lewis-Bell, Annie Fry, Lin Hawkins

Richard Bavin

THE ARBOREALISTS + GUESTS AT FYNE COURT

VENUE 135

Fyne Court, Broomfield, Bridgwater, TA5 2EQ

24 September - 6 October, 10am - 4pm

01823 451587 • nationaltrust.org.uk/fyne-court

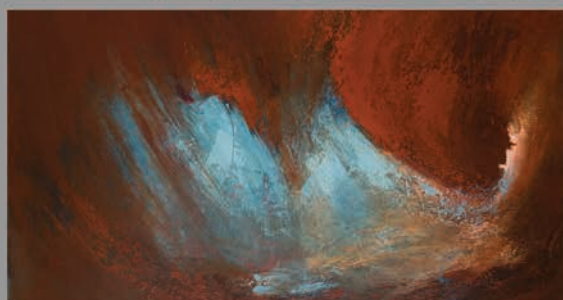
Meet the Artists: Saturday 28 September, 1 - 4pm



JOHN GAMMANS & CHRIS KAMPF



VENUE 49



SOMERSET ART WEEKS
FESTIVAL
2019

SATW
somer
somer
art works

21 SEPTEMBER - 6 OCTOBER
OPEN 10.30AM - 5.30PM
CLOSED MONDAYS & TUESDAYS

29 NORTH STREET
MARTOCK
SOMERSET
TA12 6DH

01935 827836
INFO@CFGARDENSCULPTURES.CO.UK
CKGARDENSCULPTURES.CO.UK

C L O S E

Art consultancy + contemporary art space for creative events + experiences



Installation view - Common Blue by Grenville Davey - Close House

LINE FIELD INTERALIA 15 Sept - 15 Dec 2019

Grenville Davey | Magnus Hammick | Anna Mossman

An exhibition of Turner Prize winner & acclaimed artists to
celebrate the Silver Anniversary of Somerset Art Weeks

Amanda Lynch artist in residence showing in the project
space in collaboration with Somerset Art Works
Creative Pathways programme

Close House - Somerset - TA3 6AE

For info and opening hours visit www.close ltd.com

VISUAL ARTS

JAMES THORNTON: 'IP10.18.10.19'

17 October - 10 November
The Roper Gallery, Bath Artists' Studios, The Old Malthouse, Comfortable Place, Upper Bristol Road, BATH, BA1 3AJ. 12noon - 5pm. 01225 482480 / bathartistsstudios.co.uk. "The influence of the landscape, in particular of childhood, has had a lasting impact upon James's visual and audio practice - manifesting itself through a romantic sensibility whilst exploring notions of home, our sense of belonging and the societal expectations placed upon us within an increasingly technological society. This collection of work brings together an indication to the progression of thoughts and outcomes from James's time in residence at Bath Artists Studios."

BLACK SWAN ARTS OPEN 2019

17 October - 16 November
Long Gallery, Black Swan Arts, 2 Bridge Street, FROME, BA11 1BB. Monday - Saturday 10am - 4pm. 01373 472264 / blackswanarts.org.uk. "Annual competition for original artworks by established practitioners and emerging artists."

'A SENSE OF PLACE'

18 October - 7 November
Old Town Quarry, South Road, WESTON-SUPER-MARE, BS23 3LS. Wednesday - Sunday 10.30am - 4.30pm. 01934 628050 / tinadoddart.com. "Tina Dodd's monochromatic response to the Mendip Hills contrasts with Lindy Paul's intuitive use of colour, which captures the landscape in an abstracted way."

IRENE JONES AND JAY JONES: 'KINDRED'

19 October - 9 November
Hybrid Gallery, 51 High Street, HONITON, EX14 1PW. Tuesday - Saturday 10am - 5pm. 01404 43201 / hybrid-devon.co.uk. "Mother and daughter exhibit side by side and unpick what themes they have in common and what sets their artistic work apart."

'THE LOST WORDS'

19 October - 12 January
The Royal Albert Memorial Museum & Art Gallery, Queen Street, EXETER, EX4 3RX. Tuesday - Sunday 10am - 5pm. 01392 265858 / exeter.gov.uk/RAMM. "Exhibition celebrating the relationship between language and the living world, and of nature's power to spark the imagination."



ZARA MCQUEEN

"Painting, drawing and collage. Expressive, fluid work exploring the landscape and the changing colours and textures of the natural year."

23 October - 5 November: The Gallery, Shaftesbury Arts Centre, 13 Bell Street, SHAFTESBURY, SP7 8AR. 10am - 4pm. 01747 854321 / zara-mcqueen.co.uk.

'GOOD AGE'

21 October - 3 November
Devon Guild of Craftsmen, Riverside Mill, BOVEY TRACEY, TQ13 9AF. 10am - 5.30pm. 01626 832223 / crafts.org.uk. "Devon Guild of Craftsmen and Libraries Unlimited have commissioned five UK-based professional artists, born before 1948, to make contemporary craft responding to a theme of age and change."

'LIGHT'

23 October - 13 January
Claremont Community Centre, Eastbourne Avenue, BATH, BA1 6EN. Thursday 10am - 2pm. 01225 315705. "From cultural and religious metaphor to its place at the centre of our scientific understanding, light continues to inspire."

KING EDWARD'S SCHOOL ART FAIR

25 - 27 October
King Edward's School, North Road, BATH, BA2 6HU. 10am - 4pm. £5. 07941 459384 / swartshow.com. "Over 150 exhibitors. Exhibition in aid of the Children's Hospice South West."

'ART FOR NATURE'

25 October - 8 November
The Create Centre, Smeaton Road, Spike Island, BRISTOL, BS1 6XN. Monday - Friday 10am - 4pm. 0117 922 4370 / createbristol.org. "Donated artworks by over thirty professional artists, 100% of sales going to the environmental charity Word Land Trust."

OLD BAKERY ARTISTS

26 October - 3 November
Round Tower, Black Swan Arts, 2 Bridge Street, FROME, BA11 1BB. Monday - Saturday 10am - 4pm. 01373 472264 / blackswanarts.org.uk.

ART EXHIBITION

28 October - 4 November
Hatch Gallery, 7a Church Street, CHRISTCHURCH, BH23 1BW. Tuesday - Saturday 10.30am - 4pm. 07787 517958 / hatchgallery.co.uk. "Fundraising Exhibition for Calm & Together for Short Lives."



NEROCHE ARTISTS

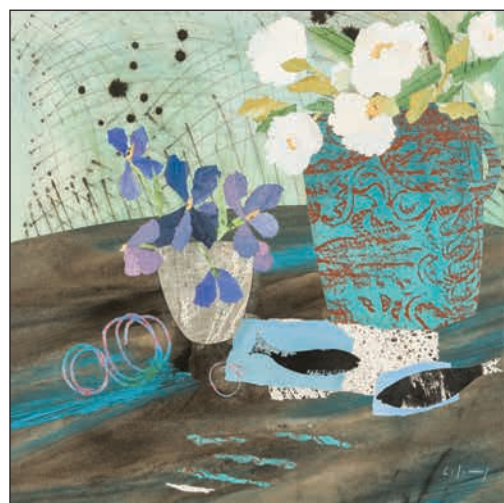
28 October - 23 November
Ilminster Arts Centre, The Meeting House, East Street, ILMINSTER, TA19 0AN. Monday - Friday 9.30am - 4.30pm, Saturday 9.30am - 2.30pm. themeetinghouse.org.uk. "Work in a variety of media by a group of artists who live and work in the Blackdown Hills."

ANNE LA BOUCHARDIERE

29 October - 2 November
Kennaway House, Coburg Road, SIDMOUTH, EX10 8NG. 10am - 4.30pm. 07717 810460 / kennawayhouse.org.uk. Paintings.

KEVIN HUGHES

2 - 9 November
The Market House, Market Place, CASTLE CARY, BA7 7AH. 9.30am - 4pm. 07816 073401. "Watercolour paintings."



Igniting Sight:
contemporary artists inspired by Turner
continues until 8 September

MARZIA COLONNA

Recent collages, drawings and sculpture
Saturday 14 September until Sunday 10 November
Petter Southall furniture

Lunch at CAFÉ SLADERS

SLADERS YARD Contemporary Art & Craft Gallery
West Bay DT6 4EL t: 01308 459511 Open every day
Evening events sladersyard.co.uk @sladersyard



PERFORMANCE

September and October 2019



NINEBARROW

Award-winning folk duo Ninebarrow return to Poole for a rare and very special hometown show - their first with a full five-piece band line-up.

Mainstays Jon Whitley and Jay LaBouchardiere will not only be joined by cellist and long-term collaborator, Lee MacKenzie, but also the extraordinary talents of John Parker on double bass and Evan Carson on percussion. With brand new songs and brilliantly realised arrangements of some old favourites, The Ninebarrow Band promise something absolutely unique.

Not only exceptional singers and musicians, Ninebarrow are also equally passionate about the stories behind their songs. An evening with the duo isn't just an evening of great music - it's also a night of history, folklore, and storytelling.

Described by Mark Radcliffe as sounding like "two halves of one voice", by Seth Lakeman as "a fantastic duo" and by Kate Rusby as "absolutely amazing", Jon and Jay combine breathtaking vocal harmonies and melodies to delivering songs that are inspired and rooted in the landscape and history of the British Isles.

Their latest album *The Waters and the Wild* reached number two in the Amazon Folk Chart and earned five star reviews in both The Morning Star and the English Folk Dance & Song Society's EDS Magazine. Folk luminary Mike Harding hailed it as "absolutely monumental".

14 September: Lighthouse, 21 Kingland Road, POOLE, BH15 1UG. 8pm. 01202 280000 / lighthousepoole.co.uk / ninebarrow.co.uk.

RUJIERO + INNER CITY SMUGGLERS + CHARLIE COLE

4 September

Lighthouse, 21 Kingland Road, POOLE, BH15 1UG. 8pm. 01202 280000. "New and unsigned local music talent."

'RELATIVELY SPEAKING'

4 - 28 September

Salisbury Playhouse, Malthouse Lane, SALISBURY, SP2 7RA. 7.30pm (Thursday and Saturday matinees 2.15pm). £28 / £17. 01722 320333 / wiltshirecreative.co.uk. "Hilarious comedy with a dizzying series of misunderstandings unravelling."

TRIO PARADIS: 'PASTORAL SCENES'

5 September

Town Hall Arts, Trowbridge Town Hall, Market Street, TROWBRIDGE, BA14 8EQ. 1.15pm. 07595 671116. "Informal palm court trio concert."



EUSEBIUS QUARTET

5 September

St Peter & St Paul Church, BISHOPS HULL, Taunton, TA1 5EB. 7.30pm. £15 / £5. 01823 252658. "The Eusebius Quartet share a passion for the intricate music written for quartets, but equally they are not afraid to experiment with other different styles of playing and enjoy studying early Haydn editions as well as string quartet recordings made in the twenties and thirties."

'ALL I SEE IS YOU'

5 - 7 September

Salisbury Playhouse, Malthouse Lane, SALISBURY, SP2 7RA. 7.45pm. £13.50 / £9. wiltshirecreative.co.uk. "Bobby works on Woolies' record counter. Ralph dreams of being a teacher. One kiss and they're hooked. But it's England 1967 and their love is illegal. Ciarán Griffiths (The Bill, Shameless) and Christian Edwards (Cyrano, Les Misérables) play two ordinary lads caught between lust, self-doubt and arrest in this multi-award winning love story inspired by real accounts of queer life 50 years ago."

EUSEBIUS QUARTET

6 September

Bridport Arts Centre, South Street, BRIDPORT, DT6 3NR. 11am. £12. 01308 424204 / bridport-arts.com. See 5 September.

FERAL BERYL

6 September

Village Pump, The Lamb, Mortimer Street, TROWBRIDGE, BA14 8BN. 8pm. £10. 07941 611262 / villagepump.org.uk. "Charming, capable, clever, confident, contagious and completely mad female duo. Winning combination of musical skill, originality and energy."

THE HANDLEBARDS: 'MUCH ADO ABOUT NOTHING'

6 September

Bridport Arts Centre, 9A South Street, BRIDPORT, DT6 3NR. 7.30pm. £19 / £13. 01308 424204 / bridport-arts.com.

SWANAGE FOLK FESTIVAL

6 - 8 September

Sandpit Field, SWANAGE. swanagefolkfestival.com.

PERFORMANCE

EUSEBIUS QUARTET

7 September

Centre For Young Musicians Taunton, Richard Huish College, South Road, TAUNTON, TA1 3DZ. 10.45am. See 5 September.

THE NEIL MAYA QUARTET: '1959'

7 September

The Beehive, Dowell Street, HONITON, EX14 1LZ. 8pm. £12 / £10 / £8. 01404 384050. "Celebrating the jazz of 1959, a vintage year with tunes from Miles Davis, John Coltrane, Dave Brubeck and Charlie Mingus."

EUSEBIUS QUARTET

7 September

The Dance House, Gouldsbrook View, North Street, CREWKERNE, TA18 7AL. 6.45pm. £15. 07776 995789 / helmtickets.com. See 5 September.

NYKLEHARPAS

7 September

Halsway Manor, near CROWCOMBE, TA4 4BD. 8pm. £10. 01984 618274 / halswaymanor.org.uk.

10 PARISHES FESTIVAL

7 - 15 September

Locations in and around WIVELISCOMBE, Somerset. 01984 624777 / 10parishesfestival.org.uk. "Open studios featuring over 60 artists plus live performance and community events. Market Day and carnival procession Sunday 9 September."

BSO BENEVOLENT FUND CONCERT

8 September

Lighthouse, 21 Kingland Road, POOLE, BH15 1UG. 3pm. 01202 280000.

'REQUIEM FOR THE HATTERS'

8 September

The Lyric, BRIDPORT, DT6 3LX. 7pm. £12 / £5. 01308 424901.

SAUL ROSE AND MACLAINE COLSTON

12 September

The King William Function Room, Barn Street, CREWKERNE, TA18 8BP. 7.30pm. £10. 07877 206124.

'MASS EPIDEMIC HYSTERIA'

12 - 14 September

Salisbury Playhouse, Malthouse Lane, SALISBURY, SP2 7RA. 7.45pm. £13.50. 01722 320333 / wiltshirecreative.co.uk. "An exploration of medical and theatrical storytelling that transcends time."

ELAINE DAVIES

13 September

Bridport Arts Centre, 9A South Street, BRIDPORT, DT6 3NR. 8pm. £10. 01308 424204 / bridport-arts.com. Jazz.



THE BARBER OF SEVILLE

"Opera Project are back at Tobacco Factory Theatres this autumn with The Barber of Seville, Rossini's great masterpiece of operatic comedy and an explosion of youth, optimism and wit."

18 September - 5 October: Tobacco Factory Theatres, Raleigh Road, BRISTOL, BS3 1TF. 7.30pm. £12 / £10. 0117 902 0344 / tobaccofactorytheatres.com.



KITTY MACFARLANE

13 September

Strode Theatre, Church Road, STREET, BA16 0AB. 7.30pm. £15 / £10. 01458 442846 / strodetheatre.org.uk.

"Promoting her debut album Namer of Clouds, local songwriter and guitarist Kitty Macfarlane comes home to Somerset to perform at this very special event hosted by Somerset Wildlife Trust."

FOLK TRIPLE BILL

13 September

Ilminster Arts Centre, The Meeting House, East Street, ILMINSTER, TA19 0AN. 7.30pm. £10. 01460 54973.

HUNGRYTOWN

13 September

Village Pump, The Lamb, Mortimer Street, TROWBRIDGE, BA14 8BN. 8pm. £10. villagepump.org.uk.

CALAN

13 September

Bridport Arts Centre, 9A South Street, BRIDPORT, DT6 3NR. 7.30pm. £18. 01308 424204.

'RANT'

13 September

Salisbury Arts Centre, Bedwin Street, SALISBURY, SP1 3UT. 8pm. £14. 01722 320333 / wiltshirecreative.co.uk.

PRISTON MUSIC FESTIVAL

13 - 15 September

Various locations in PRISTON, Bath, BA2 9EE. 07871 572969 / priston.org.uk. "A small but very cute festival featuring 35 great bands."

'CLARE HOLLINGWORTH AND THE SCOOP OF THE CENTURY'

14 September

The Beehive, Dowell Street, HONITON, EX14 1LZ. 4pm. £8 / £6. 01404 384050 / beehivehoniton.co.uk. "Paddleboat Theatre presents the tale of fearless journalist Clare Hollingworth in a family show full of storytelling and songs."

MIKE CHRISTIE

14 September

Bridport Arts Centre, 9A South Street, BRIDPORT, DT6 3NR. 7.30pm. £19. 01308 424204 / bridport-arts.com.

MUSIC STUDIO
VENUE
ACCOMMODATION
WILDLIFE AND FARM

MILL FARM MUSIC
BRADFORD ABBAS, DORSET
WWW.MILLFARM-DORSET.COM
01935 413168

PERFORMANCE

SINDHU VEE: 'SANDHOG'

14 September

Salisbury Arts Centre, Bedwin Street, SALISBURY, SP1 3UT. 7.30pm. £18. wiltshirecreative.co.uk. Comedy.

PAUL TONKINSON + MICHAEL FABBRI + TOM TAYLOR

14 September

Lighthouse, 21 Kingland Road, POOLE, BH15 1UG. 8pm. 01202 280000 / lighthousepoole.co.uk. Comedy.

OPERA HOLLOWAY: 'LA BOHEME'

15 September

Village Hall, STALBRIDGE, DT10 2NF. 7pm. £20 / £10. 01963 362355 / artsreach.co.uk. "Contemporary new production of Puccini's thrilling, passionate love story, accompanied by chamber ensemble and piano."

JASON REBELLO

15 September

Strode Theatre, Church Road, STREET, BA16 0AB. 7pm. £16. 01458 442846. "An evening of exciting improvisation, beautiful melodies and stunning keyboard virtuosity."

'JOHN FINNEMORE'S FLYING VISIT'

16 September

Lighthouse, 21 Kingland Road, POOLE, BH15 1UG. 7.30pm. 01202 280000.

'ONLY FOOLS & BOYCIE'

19 September

Bridport Arts Centre, 9A South Street, BRIDPORT, DT6 3NR. 7.30pm. £19. 01308 424204 / bridport-arts.com.

'NO MAN'S LAND'

19 - 21 September

Lighthouse, 21 Kingland Road, POOLE, BH15 1UG. 7.45pm (Saturday matinee 2.30pm). 01202 280000. "Pinter's masterful play in which two elderly writers meeting in a pub is the start of a night of booze-fuelled reminiscences and verbal sparring in which truth and memory create a world of dark humour and subtle power games."

'AGNES OF GOD'

19 - 21 September

Lighthouse, 21 Kingland Road, POOLE, BH15 1UG. 8pm (Saturday matinee 2pm). 01202 280000.

FRISKY & MANISH: 'POPLAB'

20 September

Bridport Arts Centre, 9A South Street, BRIDPORT, DT6 3NR. 7.30pm. £17 / £10. 01308 424204 / bridport-arts.com.

BATH BAROQUE

20 September

Ilminster Arts Centre, The Meeting House, East Street, ILMINSTER, TA19 0AN. 8pm. £20. 01460 54973.



THE CHESTERFIELDS

"Thirty-five years after taking their first tentative steps into the world of indie pop fame, The Chesterfields are back for a string of UK dates.

Founder member Simon Barber (bass, vocals) will be joined by former member Andy Strickland (guitar) and more recent additions Helen Stickland (guitar, vocals) and Rob Parry (drums), celebrating a band that enjoyed a string of alternative hits, including iconic 1987 debut LP, *Kettle*, only denied a UK indie chart No.1 by Sonic Youth."

21 September: Electric Palace, 35 South Street, BRIDPORT, DT6 3NY. 7.30pm. £10 / £8.50. 01308 424901 / electricpalace.org.uk/music. The Chesterfields + Dai-Nichi + DJ Alan Flint.

22 September: The Louisiana, Wapping Road, Bathurst Terrace BRISTOL, BS1 6UA. 7.30pm • £11 / £10. seetickets.com. The Chesterfields + Rodney Allen + Dai-Nichi + DJ Rocker.

ANJALI DANCE COMPANY: 'GENIUS'

20 September

Salisbury Arts Centre, Bedwin Street, SALISBURY, SP1 3UT. 2 and 8pm. £14. 01722 320333 / wiltshirecreative.co.uk.

LUKE DANIELS & NANCY KERR

20 September

The Pound Arts Centre, Pound Pill, CORSHAM, SN13 9HX. 7.30pm. £12 / £10. 01249 701628. "Two top folk performers team up for an evening of stunning contemporary music."

TOYAH

20 September

The Exchange, Old Market Hill, STURMINSTER NEWTON, DT10 1FH. 7.30pm. £22. stur-exchange.co.uk.

FOLK FIDDLE CONCERT

21 September

Halsway Manor, near CROWCOMBE, TA4 4BD. 8pm. £10. 01984 618274. "An informal concert of folk fiddle playing featuring Becki Driscoll, Nick Wyke and Paul Sartin."

BENJAMIN ZEPHANIAH

21 September

Strode Theatre, Church Road, STREET, BA16 0AB. 7.30pm. £21.50. 01458 442846. "In a compelling and inspiring show, Zephaniah explains how he fought injustice and discrimination to lead a remarkable life, while sharing a selection of stories and poems."

MAESTEG MALE VOICE CHOIR

21 September

The Beehive, Dowell Street, HONITON, EX14 1LZ. 7.30pm. £12.50. 01404 384050 / beehivehoniton.co.uk.

URBAN FOLK QUARTET

21 September

Bridport Arts Centre, 9A South Street, BRIDPORT, DT6 3NR. 7.30pm. £16. 01308 424204 / bridport-arts.com.



LEMN SISSAY: 'MY NAME IS WHY'

21 September

Salisbury Arts Centre, Bedwin Street, SALISBURY, SP1 3UT. 8pm. £14. 01722 320333 / wiltshirecreative.co.uk. "This is Lemn's life story - a story of neglect and determination, misfortune and hope, cruelty and triumph."

'IN AND OUT OF CHEKHOV'S SHORTS'

21 September

Bridport Arts Centre, 9A South Street, BRIDPORT, DT6 3NR. 7.30pm. £15 / £10. 01308 424204 / bridport-arts.com. "An exhilarating, fun and accessible romp through some of the best of Chekhov's short stories."

THE WATERMILL ENSEMBLE: 'A MIDSUMMER NIGHT'S DREAM'

24 - 28 September

Lighthouse, 21 Kingland Road, POOLE, BH15 1UG. 7.30pm (Saturday matinee 2.30pm). 01202 280000.

'SKYLIGHT'

24 - 28 September

Salisbury Playhouse, Malthouse Lane, SALISBURY, SP2 7RA. 7.45pm. £13.50. wiltshirecreative.co.uk. "One of the

Every job starts with a blank canvas.

At AztecMedia we have over 25 years experience in design and marketing. So whether you're an independent artist needing a website or a large venue looking for promotional material, everything we do is tailored to suit who you are.

aztecmedia
born to be creative®

01935 477 073 • AztecMedia.eu



PERFORMANCE



ANGELA BROWNRIDGE

"Angela has been described as 'one of the world's finest pianists' by the New York Times and is returning to Tincleton for a third year. She will be playing Beethoven, Liszt, Chopin, Bach, Scriabin and Debussy."

27 and 28 September: Tincleton Gallery, The Old School House, TINCLETON, near Dorchester, DT2 8QR. 7.30pm. £15. 01305 848909 / tinctongallery.com.

great intimate plays of passionate ideas and complex love. Delicate, hilarious and thought-provoking."

'ANIMA'

25 and 26 September

Pavilion Dance South West, Westover Road, BOURNEMOUTH, BH1 2BU. 7.30pm. £14 / £10 / £8. 01202 203630 / pds.org.uk. "Joli Vyann's new show portrays the delicate connection between two people."



THE WATERMILL ENSEMBLE:

'MACBETH'

25 - 28 September

Lighthouse, 21 Kingland Road, POOLE, BH15 1UG. 7.30pm (Wednesday and Saturday matinees 2.30pm). 01202 280000. "Shakespeare's great tragedy is reflected in the fierce reverberations of Johnny Cash, The xx and The Rolling Stones."

'THE HARD WAY: THE STORY OF HANNAH MITCHELL'

27 September

Village Hall, BROADOAK, DT6 5NL. 7.30pm. £8 / £6. 01308 424922 / artsreach.co.uk. "One-woman show of storytelling with song by acclaimed musician and composer Louise Jordan."

CHRIS FOSTER

27 September

The Trooper, STOURTON CAUNDLE, DT10 2JW. 7.30pm. £10. 01963 362890. "Traditional songs with inventive guitar arrangements and fine vocal delivery."

LEWIS CLARK

27 September

The Pound Arts Centre, Pound Pill, CORSHAM, SN13 9HX. 8pm. Free entry. 01249 701628.

'CONFESSIONS OF A COCKNEY TEMPLE DANCER'

27 September

Salisbury Arts Centre, Bedwin Street, SALISBURY, SP1 3UT. 8pm. £14. 01722 320333. "Shane Shambhu reveals his secret life as a 'fat kid' growing up in the cultural melting pot of East London to becoming an international performer in a bedazzling mix of comedy."

CRAIG MILVERTON TRIO

27 September

Ilminster Arts Centre, The Meeting House, East Street, ILMINSTER, TA19 0AN. 8pm. £20. 01460 54973. Jazz.

PARTISANS

27 September

Lighthouse, 21 Kingland Road, POOLE, BH15 1UG. 8pm. 01202 280000.

YEOVIL SUPER SATURDAY

28 September

Locations throughout Town Centre, YEOVIL, Somerset. 10am - 4pm. 01935 382424. "Talented musicians give up their own time to busk for a chosen charity (this year School in a Bag) throughout the town centre, providing a melodic backdrop to other activities that include children's craft workshops, market stalls, performance and dance."

'WHAT A WONDERFUL WORLD'

28 September

Lighthouse, 21 Kingland Road, POOLE, BH15 1UG. 11am and 2pm. 01202 280000 / lighthousepoole.co.uk. "In an amazing romp through the universe young dreamers can get their hands on the very stuff of creation."

CLIVE CARROLL

28 September

The Beehive, Dowell Street, HONITON, EX14 1LZ. 7.30pm. £12 / £8. 01404 384050 / beehivehoniton.co.uk. "A night of virtuoso guitar playing."



Regular performances across the south-west of England

UPCOMING HIGHLIGHTS



Northern Journeys

Barnstaple Queen's Theatre – Thu 19 Sep

Bournemouth Pavilion – Sat 5 Oct

Travel north on an epic voyage as Sibelius' *Finlandia* takes you on a tour of Finland's turbulent history, Grieg conjures up traditional Nordic folk melodies with his *Norwegian Dance No.1* and soloist Jesper Svedberg joins the orchestra for a performance of Saint-Saëns *Cello Concerto*.

Elgar's Masterpiece

Yeovil Octagon – Wed 25 Sep

Exeter University Great Hall – Thu 26 Sep

Another opportunity to hear Sibelius' monumental *Finlandia*, the gravely beautiful anthem for Finland's freedom, followed by Elgar's timeless and stirring *Cello Concerto*, which remains a rich and complex lyrical work evoking a sense of the English countryside. Finally, Tchaikovsky takes you on a journey of torment with his passionate but stormy *Symphony No.5*.

Great American Songbook

Poole Lighthouse – Wed 23 Oct

Exeter University Great Hall – Thu 24 Oct

Join us across the globe for the legendary *Rodeo* by Copland, telling the story of a strong-minded cowgirl, alongside Barber's haunting *Violin Concerto* - both showcasing all-American depth and charm. Heading East to frosty Russia, Mussorgsky then takes us on a stroll through a fictitious gallery with his *Pictures at an Exhibition*.

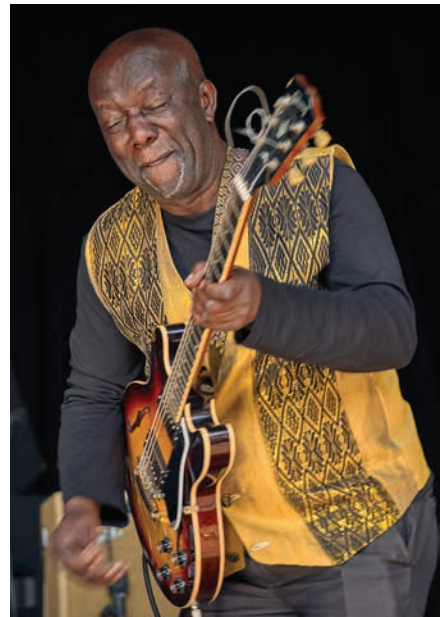
To see all our upcoming concerts visit
bsolive.com 01202 669925

You can buy tickets online this season directly through the BSO

PERFORMANCE



KATE TEMPEST



CYMANDE



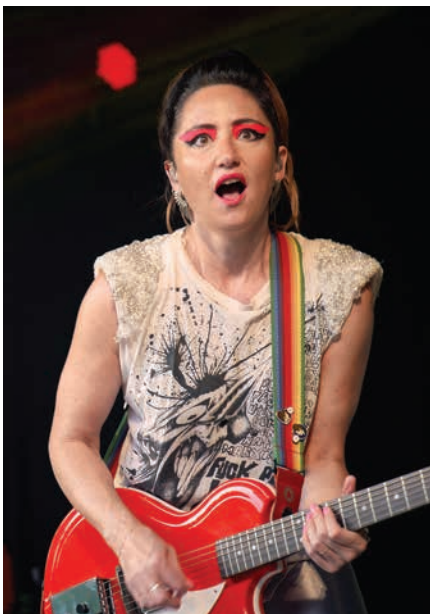
DU BLONDE



THE CAT EMPIRE

LARMER TREE FESTIVAL 2019

Photographs by Will Wilkinson



KT TUNSTALL



TOM ODELL

'THE DOGS OF WAR'

28 September
The Cause, CHIPPENHAM, SN15 3DD.
8pm. £12. shakespearelive.com.
"England at war, royal families in conflict, petty dynastic squabbles plunge the country into bloodshed. Hubris, bravery, stupidity, love and loss."

'THE HARD WAY: THE STORY OF HANNAH MITCHELL'

28 September
Village Hall, LANGTON MATRAVERS, BH19 3HA. 7.30pm. £8 / £6. 01929 423834. See 27 September.

'THE HARD WAY: THE STORY OF HANNAH MITCHELL'

29 September
Memorial Hall, PIDDLTRENTHIDE, DT2 7QF. 4pm. £9 / £6. 01300 348247 / artsreach.co.uk. See 27 September.

JI LIU

29 September
Rook Lane Chapel, FROME, BA11 1DN. 3.30pm. £18. fromeconcertsgroup.org.
"Tea time piano concert."

NIKKI & JD: 'KNOT'

29 September
School Hall, GILLINGHAM, SP8 4QR. 7.30pm. £10 / £6. 01747 833844.

DD ALLEN + HENGISTBURY + TOBIAS IN FLIGHT

2 October
Lighthouse, 21 Kingland Road, POOLE, BH15 1UG. 8pm. 01202 280000.

'THE DOGS OF WAR'

2 and 3 October
The Mission, BATH, BA1 1UF. 8pm. £12. shakespearelive.com. See 28 September.



THE ORANGE CIRCUS BAND

3 October
Village Hall, CORFE CASTLE, BH20 5EE. 7.30pm. £9 / £6. 07590 352219 / artsreach.co.uk. "Performing on banjo, guitar, fiddle, mandolin, double bass and drums, The Orange Circus Band create a high energy set of updated traditional Appalachian and bluegrass music originating from the Blue Ridge Mountain of Virginia, USA."



REMEMBERING WINDRUSH

"Guitarist Alan Weekes (Art Blakey, Jimmy Cliff) and his band join singers Just Stephen (Lee Perry, Keith Richards) and Geo for an evening of Caribbean music, soul and jazz."

5 October: Creative Innovation Centre, Memorial Hall, Paul Street, TAUNTON, TA1 3PF. 7.30pm. £5. 01823 337477 / creativeinnovationcentre.co.uk

GUITAR CONCERT

3 October
Halsway Manor, near CROWCOMBE, TA4 4BD. 8pm. £10. 01984 618274.
"Some of the UK's leading acoustic guitarists play an informal concert."

BOYD AND LANE

3 October
Wellhayes Vineyard, CLAYHANGER, Tiverton, EX16 7NY. 7.30pm. £15. 01398 361612.

TRIO PARADIS: 'THE AMERICAN COLLECTION'

3 October
Town Hall Arts, Trowbridge Town Hall, Market Street, TROWBRIDGE, BA14 8EQ. 1.15pm. 07595 671116. "Informal palm court trio concert."

ANJALI DANCE COMPANY:

'GENIUS'

3 October
Pavilion Dance South West, Westover Road, BOURNEMOUTH, BH1 2BU. 1 and 7.30pm. £14 / £10 / £8. 01202 203630. See 20 September.

'STATUS'

3 October
The Pound Arts Centre, Pound Pill, CORSHAM, SN13 9HX. 7.30pm. £12 / £10. 01249 701628 / poundarts.org.uk.

SWANAGE BLUES FESTIVAL

3 - 6 October
Locations in and around SWANAGE, Dorset. swanage-blues.org.

BOYD AND LANE

4 October
Bridport Arts Centre, South Street, BRIDPORT, DT6 3NR. 11am. £12. 01308 424204 / bridport-arts.com.

ARTHUR SMITH

4 October
Bridport Arts Centre, 9A South Street, BRIDPORT, DT6 3NR. 7.30pm. £20. 01308 424204 / bridport-arts.com.
"Sublime playfulness."

JENNY BLISS AND YAIR AVIDOR WITH AMPHION CONSORT

4 October
The Undercroft, The Bishops Palace, WELLS, BA5 2RR. 7pm. £15. bishopsalace.org.uk. "Jenny Bliss and the Amphion Consort perform a unique concert as a response to the exhibition 'Re-Formation'. This will be a profound and wonderful musical experience."

THE ORANGE CIRCUS BAND

4 October
Village Hall, BURTON BRADSTOCK, DT6 4QS. 7.30pm. £10 / £6. 01308 897421. See 3 October.

'LIFTING THE LID'

4 October
Salisbury Cathedral, The Close, SALISBURY, SP1 2EJ. 7.30pm. £12.50. 01722 555156 / salisburycathedral.org.uk. "An entertaining musical journey led by award winning pianist David Owen Norris, Head of Classical Performance and Professor of Music at the University of Southampton."

GEORGIA LEWIS AND ROWAN PIGGOT

4 October
Village Pump, The Lamb, Mortimer Street, TROWBRIDGE, BA14 8BN. 8pm. £10. 07941 611262. "Two rising folk stars."

BOYD AND LANE

4 October
Ilminster Arts Centre, The Meeting House, East Street, ILMINSTER, TA19 0AN. 7.30pm. £15. 01460 54973.

LEVERET

4 October
The Pound Arts Centre, Pound Pill, CORSHAM, SN13 9HX. 7.30pm. £15 / £14. 01249 701628 / poundarts.org.uk. "A unique collaboration between three of England's finest folk musicians, Andy Cutting, Sam Sweeney and Rob Harbron."

'WOMANS'

4 October
The Beehive, Dowell Street, HONITON, EX14 1LZ. 7.30pm. £9 / £7. 01404 384050. "A physical comedy for adults and children."

'THE DOGS OF WAR'

4 October
Merlin Theatre, FROME, BA11 2HG. 8pm. £12. shakespearelive.com. See 28 September.

'THE DOGS OF WAR'

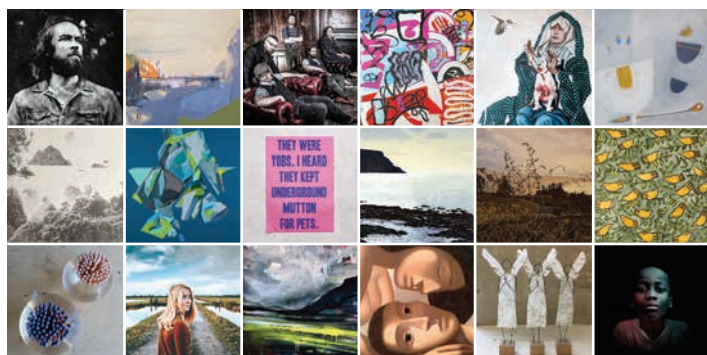
5 October
Pound Arts, CORSHAM, SN13 9HX. 8pm. £12. shakespearelive.com. See 28 September.

MINI BSO: 'AROUND THE WORLD'

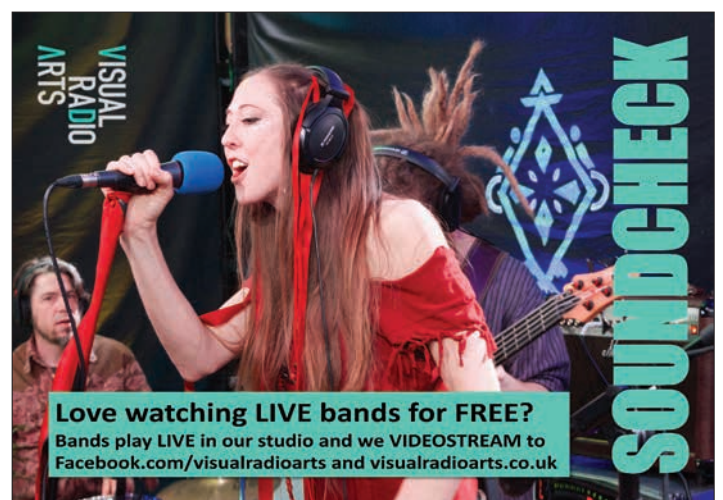
5 October
Lighthouse, 21 Kingland Road, POOLE, BH15 1UG. 11am. 01202 280000. "The perfect way to introduce children to classical music."

'CAROLE'

5 October
Lighthouse, 21 Kingland Road, POOLE, BH15 1UG. 7.30pm. 01202 280000. "The story of Carole King, one of the most successful and admired songwriters of all time."



Follow **evolvermagazine** on Instagram



Love watching LIVE bands for FREE?

Bands play LIVE in our studio and we VIDEOSTREAM to [Facebook.com/visualradioarts](https://www.facebook.com/visualradioarts) and visualradioarts.co.uk

PERFORMANCE

'A DOUBLE BILL OF DESPERATENESS'

5 October

The Lyric, BRIDPORT, DT6 3LX. 8pm.
£12 / £5. 01308 424901. "Original, challenging, and accessible theatre."

TOM STADE + ZOE LYONS + BEN NORRIS

5 October

Lighthouse, 21 Kingland Road, POOLE, BH15 1UG. 8pm. 01202 280000 / lighthousepoole.co.uk. Comedy.

BOYD AND LANE

5 October

The Dance House, Gouldsbrook View, North Street, CREWKERNE, TA18 7AL. 6.45pm. £15. 07776 995789.

THE ORANGE CIRCUS BAND

5 October

Village Hall, WINTERBORNE STICKLAND, DT11 ONT. 7.30pm. £10 / £7. 01258 880920. See 3 October.

'BREAKING THE CODE'

5 - 26 October

Salisbury Playhouse, Malthouse Lane, SALISBURY, SP2 7RA. 7.30pm (Thursday and Saturday matinees 2.15pm). £28 / £17. 01722 320333.

THE ORANGE CIRCUS BAND

6 October

Village Hall, SANDFORD ORCAS, DT9 4RX. 7.30pm. £9 / £6. 01963 220208 / artsreach.co.uk. See 3 October.

CASTLE PLAYERS: 'THE ELEPHANT MAN'

9 - 12 October

Village Hall, High Street, LYCHETT MATRAVERS, Poole, BH16 6DF. 7pm. £10. 01202 912351 / castleplayers.com.

'THE SOLDIER'

10 - 12 October

Salisbury Playhouse, Malthouse Lane, SALISBURY, SP2 7RA. 7.45pm. £13.50. 01722 320333 / wiltshirecreative.co.uk.

TERRI QUAYE

11 October

Bridport Arts Centre, 9A South Street, BRIDPORT, DT6 3NR. 8pm. £10. 01308 424204 / bridport-arts.com. Jazz.

MIKE DENHAM'S SPEAKEASY WITH EMMA FISK

11 October

Ilminster Arts Centre, The Meeting House, East Street, ILMINSTER, TA19 0AN. 8pm. £14. 01460 54973 / themeeetinghouse.org.uk. "Vintage ragtime, blues and Django swing."

MIŁOŚ: 'THE VOICE OF THE GUITAR'

11 October

Lighthouse, 21 Kingland Road, POOLE, BH15 1UG. 7.30pm. 01202 280000.



WELLS FESTIVAL OF LITERATURE

This year's Wells Festival of Literature boasts a heady selection of controversies, dilemmas, social commentators, historians, artists, entertainers, poets, novelists, well-known household names, and new voices on the brink of fame. Organisers are thrilled to welcome author, broadcaster and parliamentarian Melvyn Bragg, who will open a window on to *Abelard and Heloise*, novelist Nicci Gerrard's moving memoir of dementia, scientist Adam Rutherford's story of *How We Became Us*, historians Christopher Andrew - expert on secrecy and spying - and Diarmid McCullough's assessment of Thomas Cromwell, political commentator Peter Hennessy's expose of early sixties Britain, novelist Alison Weir's discussion of whether Anna of Kleves' lack of beauty allegedly saved her from Henry VIII, and the ever popular book group event with bestselling author Joanna Cannon.

Responding to 2018 audiences, 2019 includes memoirs - Kamal Ahmed from BBC news, punk-pop singer-songwriter Tracey Thorn, who longed to burn suburbia down, 2018 Costa winner Bart von Es's account of Lena, the 'hidden' Jewish child, Guardian food correspondent Felicity Cloake's travels hunting the perfect croissant. Patrick Gale and Jim al-Khalili offer contrasting novels. The fun and fast-paced performance event *Write Up! Speak Up!* offers local artists, poets, musicians, wordsmiths, authors, comedians, film makers and passionate individuals the chance of a five minute slot on the festival stage.

Add more - politician Chris Patten, neuroscientist Gina Rippon of gendered brain fame, Dina Nayeri's world of the refugee, Vernon Bogdanor's glimpse beyond Brexit, Countryfile's Kate Humble's inspiring walking journeys, while Keggie Carew's toe-curling misadventures show, maybe, how not to travel...

The Festival culminates in a music and poetic extravaganza from Roger McGough and his band Little Machine (above).

18 - 26 October: Various locations in and around WELLS, Somerset. 01749 834483 / wellsfestivalofliterature.org.uk.

RANDOLPH MATTHEWS

11 October

Lighthouse, 21 Kingland Road, POOLE, BH15 1UG. 8pm. 01202 280000.

FAIRPORT CONVENTION

12 October

Bridport Arts Centre, 9A South Street, BRIDPORT, DT6 3NR. 7.30pm. £25. 01308 424204 / bridport-arts.com.

LEON HUNT AND JASON TITLEY

12 October

The Speedwell Hall, Abbey Street, CREWKERNE, TA18 7HY. 7pm. £10. 07877 206124. "Traditional music from the USA and the British Isles, plus original compositions."

BOB WHITLEY & LEE MACKENZIE: 'MAGELLAN CIRCUMNAVIGATION'

12 October

Village Hall, SHIPTON GORGE, DT6 4NA. 7.30pm. 01308 897407 / artsreach.co.uk. "Folk musical."

WATKINS & SWARBRICK

12 October

Village Hall, East Street, CORFE CASTLE, BH20 5EE. 7.30pm. £11 / £10. 01305 837299. "Sensitive and extraordinary playing of guitars, violin, ukulele and mandolin, mellow vocals and rich 3-part harmonies in intimate surroundings."

JAMES LISNEY: 'ENDGAME'

13 October

St George's Bristol, Great George Street, BRISTOL, BS1 5RR. 4pm. £20 / £17.50 / £15 / £12. stgeorgesbristol.co.uk.

'NATALIE INSIDE OUT'

13 October

The Lyric, BRIDPORT, DT6 3LX. 7pm. £12 / £5. 01308 424901.



'MOUNTAIN MUSIC'

16 October

Village Hall, HOLFORD, TA5 1SD. 7.30pm. £10 / £5. 07843 348057 / holfordvillagehall.org. "Award-winning Little Bulb Theatre weave a tapestry both historical and fantastical, in an unforgettable evening of story and song."

4 COLOURS
to make a
THOUSAND
SHADES

#COLOURINGYOURFUTURE

S&G
STEPHENS & GEORGE
PRINT GROUP

WWW.STEPHENSANDGEORGE.CO.UK

01685 388888 | SALES@STEPHENSANDGEORGE.CO.UK

GOAT MILL ROAD | DOWLAIS | MERTHYR TYDFIL | CF48 3TD

FOLLOW US ON TWITTER @SandGPrintGroup



Concerts IN THE West

PROMOTING SOME OF THE BEST YOUNG PROFESSIONAL MUSICIANS IN THE UK.

14 FEBRUARY TO 15 NOVEMBER 2019
BAROQUE TO CONTEMPORARY

FEBRUARY TO JULY
TRIO SÖRA
MÉLA GUITAR QUARTET
MORIARTY WINDS

5, 6, 7 SEPTEMBER
3, 4, 5 OCTOBER
31 OCT, 1, 2 NOVEMBER
15 NOVEMBER

SARA DEBORAH & FRIENDS
ALASDAIR BEATSON & ELISSA CASSINI
CLARE HAMMOND

EUSEBIUS QUARTET
NATHANIEL BOYD & SIMON LANE
CONSONE QUARTET
RUISI QUARTET

CONCERTS IN THE WEST 2020 - 15TH SEASON
• ANDREW MARRINER, ALASDAIR BEATSON & MICHAEL PETROV
• NICHOLAS MULROY, JOHN REID & WILLIAM LINDLEY
• NICHOLAS MCCARTHY • CREATING CARMEN
• STEPHEN UPSHAW, SAM ARMSTRONG & ELOISA FLEUR-THOM
• TRIO KLEIN • FERIO SAXOPHONE QUARTET
• EMMA HALNAN & EBLANA • SAVITRI GRIER & RICHARD UTTLEY
• LINOS PIANO TRIO

CHAMBER MUSIC MINI-TOURS
IN DEVON, DORSET AND SOMERSET

concertsinthewest@gmail.com
CATHERINE MADDOCKS DIRECTOR - 01823 252658

www.concertsinthewest.org



ON SATURDAY 5th OCTOBER 2019
STATE OF TRUST PRESENTS A REMEMBERING
WINDRUSH CONCERT AND CELEBRATION WITH
ALAN WEEKES QUARTET
and special guests Just Stephen & Geo



CARIBBEAN MUSIC, SOUL & JAZZ
PLUS COOL VIBES & MELLOW SOUNDS
At CICCIC Creative Innovation Centre, Memorial Hall, Paul Street
Taunton TA1 3PF. Doors Open 7.30 Entrance £5

CHURCH
URBAN
FUND

www.stateoftrust.net

WINDRUSH
2019



YEoViL SUPER SaTuRDay

28 SEPTEMBER 2019
Yeovil Town Centre

YEovil BUSKFEST • BUGFEST • CRAFT FAIR
MARKET STALLS • CHILDREN'S ACTIVITIES
GARDENING CELEBRATIONS • WORKSHOPS
AND LOTS MORE!

 facebook.com/yeovilsupersaturday

DorchesterARTS

The Corn Exchange

La Bohème | Opera Holloway
Saturday 14 September

A contemporary production performed in Opera Holloway's trademark intimate and immediate style.

Anima | Joli Vyann
Wednesday 9 October

Supremely talented dancers as well as phenomenal acrobats, blurring the boundaries between dance, circus and theatre - with live music. Co-presented by Activate Performing Arts.

The Juan Martín Flamenco
Dance Trio

Friday 25 October

Modern flamenco bringing together elegant dance, Andalusian singing and the intensity and emotion of one of the world's finest guitarists.

Hang Massive: Luminous
Emptiness Tour

Saturday 26 October

On their first UK tour, featuring amazing sonic soundscapes and uplifting beats and bass all which complement the rich sound of the handpan.

01305 266926

www.dorchesterarts.org.uk

Charity No. 1015546



Lighthouse

POOLE'S CENTRE FOR THE ARTS

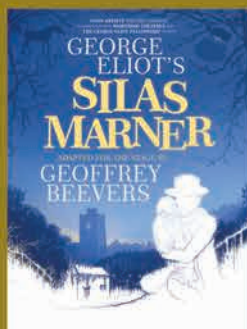


Tuesday 24 – Wednesday 28 September

A MIDSUMMER NIGHT'S DREAM AND MACBETH

The multi-talented Watermill Ensemble return with a unique double bill of Shakespearean wit, humour and tragedy in two electrifying productions.

A MIDSUMMER NIGHT'S DREAM 7.30pm (Tue, Thu, Fri), 2.30pm (Sat Mat)
MACBETH 7.30pm (Wed, Sat), 2.30pm (Thu Mat) | THEATRE



Friday 4 October

SILAS MARNER

Outcast from society, a poor weaver is eaten up with bitterness and anger. He becomes a doomed miser and recluse, until he is forced to take in a young orphan girl whose friendship leads to joy, love and his redemption.
 8pm | THE SHERLING STUDIO



Saturday 19 October

IN AND OUT OF CHEKHOV'S SHORTS

Featuring original live music and story-telling, this is an exhilarating, fun romp through some of Chekhov's short stories including The Lady with the Little Dog, The Chemist's Wife, An Avenger and The Bear.
 8pm | THE SHERLING STUDIO



Saturday 16 November

MOTHERLAND

Punching fascists in the face through the medium of drag. This visceral full bodied dragged up queertastic howl of a show explores nationalism, identity and our ability to speak out.
 8pm | THE SHERLING STUDIO

PERFORMANCE



PANTA REI DANSETEATER: SILENCE

"This very special performance will perform in people's living rooms. The dancers will explore what arises when we find that moment of silence in our homes. The thoughts, feelings, and revelations that arise. Along with a live musician, they will use gesture, rhythm, and interactive moments to share a very special experience."

16 October: Catemwood House, HALSTOCK, DT2 0NT. 6 and 8.15pm.
 £10 / £6. 01935 891744 / artsreach.co.uk.

ODDBODIES: 'KING LEAR'

17 October
 Village Hall, MELBURY OSMOND, DT2 0NL. 7.30pm. £9 / £6. 01935 83453.
"Fast paced, funny, poignant and ultimately heartbreaking production, told with all of Oddbodies' trademark physical ingenuity and visual flair."

'HOMING BIRDS'

17 - 19 October
 Salisbury Playhouse, Malthouse Lane, SALISBURY, SP2 7RA. 7.45pm. £13.50. 01722 320333 / wiltshirecreative.co.uk.
"A young Afghan refugee desperately wants to reconnect with his roots and find his long-lost sister."

CRAIG MILVERTON AND HIS LEGACY BAND

18 October
 Ilminster Arts Centre, The Meeting House, East Street, ILMINSTER, TA19 0AN. 8pm. £14. 01460 54973.

ANNE NIEPOLD & RICCARDO TESI

18 October
 Halsway Manor, near CROWCOMBE, TA4 4BD. 8pm. £10. 01984 618274.
"Two of Europe's greatest exponents of the diatonic button accordion."

ODDBODIES: 'KING LEAR'

18 October
 Village Hall, WEST STAFFORD, DT2 8AG. 7.30pm. £9 / £6. 01305 261984 / artsreach.co.uk. See 17 October.

'MOUNTAIN MUSIC'

18 October
 Memorial Hall, STURMINSTER MARSHALL, BH21 4BQ. 7.30pm. £9 / £6. 01258 857019. See 16 October.

ANA MANERO & ARTURO SERNA

18 and 19 October
 Tincleton Gallery, The Old School House, TINCLETON, near Dorchester, DT2 8QR. 7.30pm. £15. 01305 848909.
"As a chamber musician, Ana Laura Manero enjoys an active performance schedule with cellist Arturo Serna. Their ensemble, Duo Teresa Carreño, champions music from the American continent, as well as masterpieces of the standard repertoire."

'MOUNTAIN MUSIC'

19 October
 Village Hall, STUDLAND, BH19 3AE. 7.30pm. £10 / £7. 01929 450204 / artsreach.co.uk. See 16 October.

ODDBODIES: 'KING LEAR'

19 October
 Village Hall, CHILD OKEFORD, DT11 8EL. 7.30pm. £10 / £6. 01258 861621 / artsreach.co.uk. See 17 October.

MERRY NEET WITH TAFFY THOMAS AND FRIENDS

19 October
 Halsway Manor, near CROWCOMBE, TA4 4BD. 8pm. £10. 01984 618274.
"Storytelling and music on the theme of flora and fauna in folk tales."

'IN AND OUT OF CHEKHOV'S SHORTS'

19 October
 Lighthouse, 21 Kingland Road, POOLE, BH15 1UG. 7.45pm. 01202 280000. See 21 September.



KIRSTY MCGEE WITH BEN BEDFORD

19 October
 Café Sladers, Sladers Yard, WEST BAY, Bridport, DT6 4EL. 8pm. £12. 01308 459511 / sladersyard.co.uk. "Jazz."

FAIR ORIANA

20 October
 Rook Lane Chapel, FROME, BA11 1DN. 3.30pm. £10. fromeconcertsgroup.org.
"Soprano duo with lute and viol."

'MOUNTAIN MUSIC'

20 October
 Comrades Hall, BROADWINDSOR, DT8 3QP. 4pm. £10 / £6. 01308 867252 / artsreach.co.uk. See 16 October.

01202 280000

www.lighthousepoole.co.uk



TASHI LHUNPO MONKS

21 October

Strode Theatre, Church Road, STREET, BA16 0AB. 7.30pm. £12.50. 01458 442846 / strodetheatre.org.uk.

TYCA

22 October - 3 November

Various locations in TAUNTON, Somerset. artstaunton.co.uk. "A brand new and exciting festival of arts for young people in Taunton. Events include music, theatre, circus and dance performances, plus a range of participatory workshops for young people, including stand up comedy, circus, arts and crafts."

'TANGOMOTION'

23 October

Lighthouse, 21 Kingland Road, POOLE, BH15 1UG. 7.45pm. 01202 280000.

SHERBORNE LITERARY FESTIVAL

23 - 25 October

Various locations in SHERBORNE, Dorset. sherborneliterarysociety.com.

'FAR FROM THE HOME I LOVE'

24 October

Lighthouse, 21 Kingland Road, POOLE, BH15 1UG. 7pm. 01202 280000.

"International pianist Margaret Fingerhut tells the story of some of the many composers who were refugees, or who migrated for their work."

SYD LAWRENCE ORCHESTRA: 'BIG BAND SPECTACULAR'

24 October

Lighthouse, 21 Kingland Road, POOLE, BH15 1UG. 7.30pm. 01202 280000.

BARBARA DICKSON & RAB NOAKES

24 October

Lighthouse, 21 Kingland Road, POOLE, BH15 1UG. 7.45pm. 01202 280000.

'THUNDER ROAD'

24 October

St Andrew's Community Hall, CHARMOUTH, DT6 6LH. 8pm. £9 / £6. 07967 759135. "Red Cape Theatre present a bold, dark comedy about the power of the Heimlich manoeuvre, the call of the open road, and the kind of friendship you'd take a bullet for."

SPIKE'S FIVE & DIME JAZZ BAND

24 October

Martock Church, Church Street, MARTOCK, TA12 6JL. 7.30pm. £10 / £9. 01935 829576. "7-piece band from South Wales, playing popular tunes recorded in New York by small bands between 1920 and 1935, prior to the Swing era. A different, but pleasing, musical experience."



A GLOVER NOT A FIGHTER

"Horror movies. Lactose intolerance. Bike rides. Tom Glover is a comic not afraid to tackle the big issues. This is the debut show from a snowflake son of an alpha male trying to do right in a world that is wrong."

9 October: The Lyric, BRIDPORT, DT6 3LX. 8pm. £10. 01308 424901.

'EXTRAORDINARY WALL OF SILENCE'

24 - 26 October

Salisbury Playhouse, Malthouse Lane, SALISBURY, SP2 7RA. 7.45pm. £13.50. 01722 320333 / wiltshirecreative.co.uk. "An unmissable feast for the senses."



THE TEACUPS

25 October

Ilminster Arts Centre, The Meeting House, East Street, ILMINSTER, TA19 0AN. 8pm. £14. 01460 54973. "Award-winning acapella quartet singing a wide variety of British folk songs, with heart, soul and extraordinary close-harmonies."

ISATA KANNEH-MASON

25 October

St Michael's Church, St Michael's Hill, MILVERTON, TA4 1JS. 7.30pm. £17 / £15 / £10 / £2. 03336 663366 / milvertonconcerts.org. Piano recital.

'THUNDER ROAD'

25 October

Village Hall, STALBRIDGE. 7.30pm. £9 / £6. 01963 362355 / artsreach.co.uk. See 24 October.

TETE-A-TETE QUINTET

25 October

Lighthouse, 21 Kingland Road, POOLE, BH15 1UG. 8pm. 01202 280000. "Joyous, soulful, swinging sounds."

ROGER MCGOUGH

25 October

Bridport Arts Centre, 9A South Street, BRIDPORT, DT6 3NR. 7.30pm. £16.50. 01308 424204 / bridport-arts.com. "The nation's favourite poet."

'THE LITTLE PRINCE'

25 and 26 October

Pavilion Dance South West, Westover

Road, BOURNEMOUTH, BH1 2BU. 1 and 6pm. £14 / £10 / £8. 01202 203630 / pdsww.org.uk.

'LIVING SPIT'S ODYSSEY'

25 and 26 October

Salisbury Arts Centre, Bedwin Street, SALISBURY, SP1 3UT. 8pm (Saturday matinee 2.30pm). £14. 01722 320333. "Captivating singer Kate Dimbleby joins Bristol's favourite comedy theatre troupe Living Spit to reimagine Homer's classic work."

'SIXTIES GOLD'

26 October

Lighthouse, 21 Kingland Road, POOLE, BH15 1UG. 7.30pm. 01202 280000.

BLACK CHERRY

26 October

Lighthouse, 21 Kingland Road, POOLE, BH15 1UG. 8pm. 01202 280000. "A night of improvised comedy."

ANNA MUDEKA: 'KURE KURE'

26 October

Hut, POWERSTOCK, DT6 3TB. 7.30pm. £9 / £6. 01308 485474. "Anna Mudeka is a singer, dancer, and storyteller from Zimbabwe, now based in Norfolk. Expect haunting vocals, highly accomplished mbira playing, dancing and drumming and multi-media visuals."

DUO BRANSCHKE / ARMSTRONG

26 October

Halsway Manor, near CROWCOMBE, TA4 4BD. 8pm. £10. 01984 618274. "Two of Europe's most innovative and accomplished bagpipers."

ANNA MUDEKA: 'KURE KURE'

27 October

Portman Hall, SHILLINGSTONE, DT11 0SF. 7.30pm. 01258 860319. £9 / £6. artsreach.co.uk. See 26 October.

'DR DOLITTLE'

29 October

Strode Theatre, Church Road, STREET, BA16 0AB. 11am and 2pm. £11.50 / £8.50. 01458 442846. "The ideal show for all the family."

'IT'S TRUE, IT'S TRUE, IT'S TRUE'

30 October

The Pound Arts Centre, Pound Pill, CORSHAM, SN13 9HX. 7.30pm. £12 / £10. 01249 701628 / poundarts.org.uk. "Breach Theatre restage the 1612 trials of Agostino Tassi for the rape of baroque painter Artemisia Gentileschi."

YEOVIL LITERARY FESTIVAL

31 October - 4 November

Octagon Theatre, YEOVIL. yeovilliteraryfestival.co.uk.

SEPTEMBER 2019 | FREE

BRIDPORT TIMES

A MONTHLY CELEBRATION OF PEOPLE, PLACE AND PURVEYOR

WEAVING TALES

by Graham Smith

bridporttimes.co.uk

BRIDPORT TIMES

A MONTHLY CELEBRATION OF PEOPLE, PLACE AND PURVEYOR

OUT NOW AND ONLINE

bridporttimes.co.uk

CLASSIFIEDS

OPPORTUNITIES

● **Thelma Hulbert Gallery (THG)** is seeking makers who produce high quality, contemporary work, either one-offs or small scale production, to show in their annual Christmas selling exhibition of contemporary craft and design. South West makers are invited to submit their work for Present Makers 2019 (9 November - 21 December 2019). A leading event in the South West crafts calendar, this exhibition celebrates the talent of contemporary crafts people and designer-makers, who create unique hand-made and locally-designed gifts. Present Makers 2019 is selected from open submissions showcasing creative innovation across craft and design including glass, wood, paper, textiles, prints, ceramics, furniture, jewellery and much more. The deadline for applications is Tuesday 17 September 2019. Visit thelmahulbert.com for more details or how to apply.

● **Watercolour tutor needed** (beginners to advanced) for regular weekday classes. Prefer practising artist with teaching experience. Tutors for other media and cultural activities also considered. Sherborne ArtsLink: 01935 815899 / www.sherborneartslink.org.uk.
● **The Mothership: Artist Residencies** in Rural Dorset 2019. The Mothership project, which emerged in 2016 in rural Dorset from the cosmic skies of rural loneliness juxtaposed with the contained space of the domestic sphere, is an invitation for the chance encounters of the urban art world to occur in this unlikely location, a house at the edge of a wood. The Mothership is an offering of time and space for artists without pressure to produce anything particular. This is a social art project, an experiment in autonomy and scale, exploring the relationship between host and guest and the exchange that may occur. This is an unpaid residency opportunity and a fee is charged to cover overheads. Deadline Friday 20 December 2019. Please see annabest.info/residencies/ for further information on how to apply.

● **Call for New Members:** The Black Swan Guild is an exciting new association of makers at Black Swan Arts and furthers their commitment to nurture and showcase high-quality work from the widest possible range of artists and craftspeople. Quality will take precedence over other factors such as qualifications, experience, status and geographic location. Online submissions for new membership are welcomed between 23 August and 9 September. More info: www.blackswanarts.org.uk.
● **Call for Entries:** Black Swan Art Open 2019, 18 October - 26 November. Judges - Robert Devereux, Katherine Fry, Luke Jerram, Jaqueline Moore, Sandra Porter. Prizes worth over £3,000 including £1,000 First Prize supported by Hauser & Wirth Somerset, £1,000 Sue Conrad prize, £500 The Lindy Pelley Prize and Peoples' Choice Award of £250. Deadline 13 September. All info and submission details: www.blackswanarts.org.uk.

WORKSHOPS AND COURSES

● **Learn to Paint in Watercolour:** classes start 5th September 2019 Gillingham, Dorset. Thursdays 2 - 4pm for 8 weeks, course fee £120. Enrolments: www.laura-jolliffe.co.uk.

● **Wallpaper Weekend Workshop** - 4, 5, 6 October 2019 in Symondsburry, Bridport: 7 - 8.30pm Friday, 10am - 4pm Saturday and Sunday. One of UK's only handmade wallpaper makers shares the secrets of creating a repeat-pattern and the principles of transforming a plant study into a design. Learn the theory by cutting your linoblock then handprint your own paper. No experience or equipment needed. Great fun. £300 includes all materials and worksheets. More info and booking: hugh@dunfordwood.com.

● **Residential Basketry and willow-work** courses for beginners to advanced makers with traditional and contemporary willow artist Sarah Webb. Booking at www.halswaymanor.org.uk.

● **Flux'n'Flame Jewellery School:** Now one of the largest independent jewellery schools in the UK offering an ever expanding range of traditional jewellery making courses from 1 day tasters, weekend courses and weekly classes to a 6 day Summer School and specialist masterclasses. Taught by professional jewellery designers and set in a beautiful purpose built workshop in the heart of the Dorset countryside near Milton Abbas. www.fluxnflame.co.uk. For more info please call Jesa on 01258 881690 / 07785 550771.

● **Booking now - Autumn Term** of weekday classes across a range of styles/media. All our tutors are practising artists with experience of and a passion for teaching. Choose from life drawing, interior design, oils, acrylics, waterbased media, pastels, portraits, landscapes, drawing, ceramics and more. Friendly groups taking place in Sherborne. Sherborne ArtsLink 01935 815899 www.sherborneartslink.org.uk.

● **Life Drawing, Exeter.** Untutored sessions, Sundays 10am - 12.30pm. £9. 01392 273744 / adrian@afgwyatt.plus.com.

● **Photography Workshops, Ilminster.** Workshops in photography available. Traditional from 35 mm to 5 x 4, darkroom developing and printing. Tuition on exposure and correct negative. Also digital basics and advanced. One to one or group days. Justin Orwin, e: orwinstudio@gmail.com.

● **Creative stone carving weekends** in the beautiful Mendip Hills. Please look at my website for details and info: patrickbarkersculptor.co.uk.

● **Cyanotype Printing Workshops.** Make gorgeous blue prints, lampshades, table lanterns. No previous skills needed. Location / time to suit you. Materials provided. From £25. 01305 837299 / www.craftcourses.com/providers/sunlight-blue-cyanotype-lampshade-workshops.

● **Bookbinding courses and workshops** in Butleigh near Glastonbury. See booklove.wixsite.com/website for info.

MISCELLANEOUS

● **Icons by Somerset based Byzantine Iconographer** working in 24ct gold leaf and egg tempera on traditional hand prepared gessoed boards. Trained under Master Iconographer. Commissions accepted. All enquiries and ideas / subjects welcome for discussion / guidance. Tel. 01460 258896.

● **Wanted:** Classical and Jazz LP records. Tel: 01458 834102 / 07704 229979 / email: tonyartony@aol.com.

● **Books Wanted.** We buy all types of books, particularly 20th century Art, Architecture and Design. Telephone Karen Jakobsen: 01258 471249.

● **Experienced professional female model.** Available in Poole and Bournemouth Area. Contact Lilly: 0780 4020 735.

● **Very experienced and professional male model** for life drawing, portrait, sculpture and photo shoots with large array of costumes and props. Car owner and willing to travel. Reasonable rates. Contact geoffreyallen3@gmail.com / 07816 997732.

● **Life Model.** Male, experienced, reliable, own car, travel anywhere, Dorset. Tutored / untutored. 07770 618089 or anu.now78@gmail.com.

● **Male life model** based in Wimborne, Dorset looking for work. If interested, please email tomloydfrancis@gmail.com or call 07985 374926.

● **Deadline for Evolver 114 (November and December issue): Monday 7 October**

FREE EVOLVER LISTINGS

Exhibition and performance listings should be emailed to: listings@evolver.org.uk

Please supply information (in upper and lower case) in the following order: Event. Date(s). Venue, address (including postcode). Times. Admission fee (if any). Contact number / website. Up to 30 words about the event.

EVOLVER CLASSIFIEDS

20p per word • Add £5 for BOX • Add £10 for RED BOX

1) Email to classifieds@evolver.org.uk

2) Send cheque (payable to 'Evolver Media') to:

EVOLVER CLASSIFIEDS, EVOLVER MEDIA, 8 BUCKLAND ROAD, PEN MILL TRADING ESTATE, YEOVIL, SOMERSET BA21 5EA

 **BLACKSWAN OPEN 2019**

HAUSER & WIRTH
SOMERSET

mount

EVOLVER

ReScript

LOTTE

LOTTE

KOBI & TEAL

CALL FOR ENTRIES

Deadline 13 Sept

£3000 worth of prizes to be won

JUDGES

Robert Devereux: ex-chair of Frieze. **Katharine Fry:** artist.

Elly Hawden: director of Hauser & Wirth Somerset.

Luke Jerram: Museum of the Moon. **Sandra Porter RWA:** artist.



EXHIBITION

18 Oct — 16 Nov

blackswanarts.org.uk

galleries | studios | shop | cafe

2 Bridge Street, Frome BA11 1BB | www.blackswanarts.org.uk

OPEN: Mon - Sat 10am-4pm and Independent Market Sundays

Registered Charity No. 292463

framing, printing, installation

www.mount-art.co.uk | 01373 473894



NEW FORMAT FOR 2020

DORSET ART WEEKS

23 MAY - 7 JUNE 2020

Calling all artists, designers, makers,
filmmakers, galleries

REGISTRATION INFORMATION FROM **6 SEPTEMBER**

APPLICATIONS OPEN **1 NOVEMBER**

APPLICATIONS CLOSE **1 DECEMBER**

dorsetvisualarts.org

NB: New category invites expressions of interest
September / October

DORSET VISUAL ARTS

SUBSCRIBE TO EVOLVER ONLINE

evolver.org.uk



Classes for Painting & Drawing

Drop in, join in, pay on the day
No need to pay when you're not there

at **Abbotsbury Studio**

Expert tuition, excellent models,
good facilities, all welcome

www.abbotsburystudio.co.uk

A bridge to original experience, for
professionals, amateurs, have a go artists

**Life Classes, Portrait,
Landscape, Abstract**

observational skills, analytical disciplines

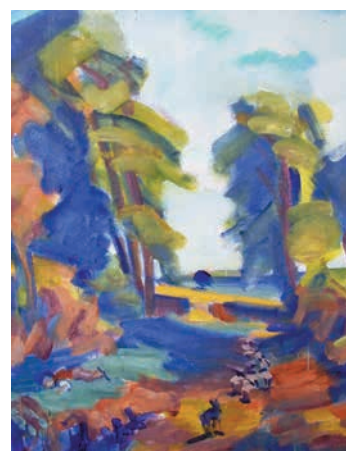
For Students: essential skills, techniques,
portfolio guidance

For Beginners: a sound foundation, revelations

Tutor **John Meaker** uses Classical or Modernist
techniques in developing each individual's
processes of work, encouraging a *dialogue with
nature, search for Abstraction and the Art of
ideas, with reference to Art History.*

Enquiries: 07816 850107

johnmrmeaker@btinternet.com



EVOLVER SPONSORS AND OUTLETS



EVOLVER IS AVAILABLE **FREE** AT THE FOLLOWING WESSEX OUTLETS:

ABBOTSBURY: Dandel Gallery. **AXMINSTER:** Axminster Arts Café, Sublyme Café. **BATH:** Art Salon, Bath Artists' Studios, Beaux Arts, Edgar Modern Gallery, Fringe Arts, Holburne Museum of Art, Michael Tippett Centre, University of Bath, Victoria Art Gallery. **BERE REGIS:** Cyril Wood Court. **BLANDFORD:** Bryanston Arts Centre, Forum Café, Forum Framers. **BOURNEMOUTH:** All Fired Up, Artcetera, Flux Art Supplies, Miramar Hotel, Pavilion Dance, Royal Bath Hotel, Russell-Cotes Museum & Art Gallery. **BOWER HINTON:** The Hollies Hotel. **BRADFORD ON AVON:** Wiltshire Music Centre. **BRIDGWATER:** Bridgwater Arts Centre, Clayhill Arts, Engine Room. **BRIDPORT:** Beach & Barnicott, Bridport Arts Centre, Bridport Old Books, Bridport Music, The Bull Hotel, Clocktower Music, Literary and Scientific Institute, Lyric Theatre, St Michael's Studios. **BRISTOL:** Bocabar, Bristol Fine Art, Centrespace, Colston Hall, Create Centre, Folk House, Jamaica Street Artists, Lime Tree Gallery, Bristol Old Vic, PRSC Gallery, RWA, Spike Island, St George's, Tobacco Factory, Trinity Centre, UWE, Watershed. **BROADWINDSOR:** Craft & Design Centre. **BRUTON:** Bruton Art Factory, Bruton Castle, At The Chapel, Hauser and Wirth. **BUDLEIGH SALTERTON:** Brook Gallery. **BURNHAM ON SEA:** Princess Theatre & Arts Centre, Seabreeze Gallery. **CASTLE CARY:** Bailey Hill Bookshop, David Simon Gallery, Trowbridge Gallery. **CHARD:** Art Café, Barleymow's, Hornsbury Mill Hotel. **CHEDDAR:** Sketch Café. **CHEDDON FITZPAINE:** Hestercombe Gallery. **CHRISTCHURCH:** Hatch Gallery, Hayloft Gallery, Red House Museum, Regent Centre. **CLEVEDON:** Fizz Gallery. **CONGRESBURY:** Church House Designs. **CORFE CASTLE:** Boilerhouse Gallery, Gallery 41, Morton House Hotel. **CORSHAM:** Pound Arts. **CREWKERNE:** Phoenix Books. **CROCKERTON:** Bull Mill Arts. **CROWCOMBE:** Halsway Manor. **CULLOMPTON:** Cullompton Community College. **CULMSTOCK:** The Strand Stores. **DEVIZES:** Bluestone Gallery, St

John's Art & Deco, Wiltshire Museum, Wine Street Gallery. **DORCHESTER:** Artsreach, Dorchester Arts, Duke's, Dorset County Museum, Frank Herring & Sons, Gallery on The Square, The Little Keep. **EAST LAMBROOK:** East Lambrook Manor Gardens. **EXETER:** Academy of Music, The Cavern, Corn Exchange, Exeter School of Art, Phoenix Arts Centre, Royal Albert Memorial Museum, Southgate Gallery. **FROME:** Black Swan Arts, Cheese and Grain, Fiat Lux, Hubnub Centre, Merlin Theatre, Mount, Rook Lane Arts. **GILLINGHAM:** Bowridge Gallery, The Idea Works, Slade Centre. **GLASTONBURY:** Abbey Muse Gallery, Bocabar, Glastonbury Galleries, Red Brick Building, Rural Life Museum. **HEMYOCK:** Healthy Living Centre. **HIGHCLIFFE:** In The Frame. **HOLTON HEATH:** Holton Lee. **HONITON:** The Beehive, Boston Tea Party, Hybrid Gallery, Strummer Pink, Thelma Hulbert Gallery. **ILMINSTER:** Dillington House, Ilminster Arts Centre, Millhouse. **LANGPORT:** 4 Every Cloud, Art Tea Zen, Shakspeare Glass, Somerset Art Works. **LANGTON MATRAVERS:** Burngate Stone Carving Centre. **LYME REGIS:** Blue Lias, Coombe Street Gallery, Fine Art Framing, Marine Theatre, Studio 19. **MARLBOROUGH:** Framemakers. **MARTOCK:** 303 Gallery, Martock Gallery. **MERE:** Beaumont Gallery. **MILDENHALL:** Rabley Contemporary Drawing Centre. **MILTON ABBAS:** Dorset Crafty Barn, Flux'n'Flame. **MINEHEAD:** Courtyard Framing, Leo Davey Gallery, Regal Theatre. **MORCOMBELAKE:** Artwave West. **MUCHELNEY:** John Leach Gallery. **NEW MILTON:** Forest Arts. **NORTH CURRY:** Community Café. **OTTERTON:** Otterton Mill. **POOLE:** Arts University Bournemouth, Bournemouth University Atrium Gallery, Guildhall Gallery, Josephine Wall Gallery, Lighthouse, The Gallery Upstairs, Poole Museum. **PORLOCK:** Churchgate Gallery, Melody Art. **PORTLAND:** B-Side Outpost, White Stones. **SALISBURY:** City Hall, Fisherton Mill, Framemakers, Noble Art Supplies, Salisbury Arts Centre, Salisbury Museum, Salisbury Playhouse, Studio 53, Wiltshire Gallery, Young Gallery. **SEATON:** Arts Café. **SEAVINGTON:** Village Shop. **SHAFTESBURY:**

The Cygnet, Grosvenor Hotel, Salt of the Earth, Shaftesbury Arts Centre. **SHEPTON MALLET:** One Craft Gallery. **SHERBORNE:** Artslink, Jerram Gallery, New Digby Hall, Old Barn Framing Gallery, Winstone's. **SIDMOUTH:** East Devon Art Academy, Flo and Us, Kennaway House, Winstone's. **SOMERTON:** ACE Arts, Gifted Company & Gallery Coffee Shop. **SOUTH CADBURY:** Chapel Cross Tea Rooms. **SOUTH PETHERTON:** David Hall. **STALBRIDGE:** Dike & Sons. **STOKE ST GREGORY:** Willows & Wetlands Centre. **STOURHEAD:** First View Gallery. **STREET:** Millfield School Atkinson Gallery, Strode Theatre. **STURMINSTER:** The Exchange, Poet's Corner, Wessex Photographic. **SWANAGE:** Durlston Castle, L'Artishe Gallery, Mowlem Theatre, Mulberry Bush Gallery, Purbeck New Wave Gallery, Quarr Gallery, Sansom Gallery. **TAUNTON:** Brewhouse Theatre, CIC CIC, Framers, Ginger Fig, Jane Amour, Mount Somerset Hotel, Queen's College, Tacchi-Morris Arts Centre, University Centre Somerset. **TINCLETON:** Tincleton Gallery. **TISBURY:** Messums Wiltshire. **TIVERTON:** Lantic Gallery. **TROWBRIDGE:** Arc Theatre, The Lamb, Trowbridge Arts. **VERWOOD:** The Hub. **WAREHAM:** Creative Gallery, Furzebrook Studios, Priory Hotel, Rex Cinema. **WATCHET:** Contains Art. **WELLINGTON:** Old Brick Workshop. **WELLS:** A2 Gallery, Andelli Art, Good Earth, Heritage Courtyard Studios, Somerset Guild of Craftsmen Gallery and Shop. **WEST BAY:** Sladers Yard. **WEST COKER:** Lanes, Old School Room. **WESTHAY:** Somerset Crafts. **WESTON-SUPER-MARE:** Frame Station, Playhouse, Weston College. **WEYMOUTH:** Gallery on The Wey, Leighton Gallery, Weymouth College, Weymouth Pavilion. **WILLITON:** Breeze Art Gallery. **WIMBORNE:** Allendale House, Square Records, Walford Mill Craft Centre. **WOODBURY:** Woodbury Studio Gallery. **WRINGTON:** Barleywood Studios. **YEovil:** Octagon Theatre. **YETMINSTER:** Old School Gallery.

Plus selected **TOURIST INFORMATION CENTRES** and **LIBRARIES** throughout Wessex.



ACOUSTIC DISTRIBUTION

Atkinson GALLERY



Boilerhouse GALLERY



THE CREATIVE GALLERY

DorchesterARTS

DORSET VISUAL ARTS



Lighthouse
POOLE'S CENTRE FOR THE ARTS



SLADERS YARD



Tincleton Gallery



WILTSHIRE CREATIVE

EVOLVER IS SPONSORED BY:

ACE Arts • Acoustic Distribution
Atkinson Gallery • Aztec Media • B-Side
Black Swan Arts • Boilerhouse Gallery
Bournemouth Symphony Orchestra
The Creative Gallery • Dorchester Arts
Dorset Visual Arts • Gallery on the Square
Lighthouse • Mount • Sladers Yard
Somerset Art Works • Stephens & George
Thelma Hulbert Gallery • Tincleton Gallery
Walford Mill Crafts • Wiltshire Creative

VISUAL ARTS

@ SALISBURY ARTS CENTRE

SALISBURY
ARTS CENTRE
PART OF WILTSHIRE CREATIVE



Image: © Kate Wilson



Image: © Jennifer Hall



Image: © Francesca McLean



Image: 'White Roses with Eyes' © Nicola Bealing

AUTUMN & WINTER SEASON 2019/20

Explore Salisbury Arts Centre's full visual arts programme at wiltshirecreative.co.uk

The Gallery at Salisbury Arts Centre is open
Monday - Saturday from 10am - 3pm

BEDWIN ST, SALISBURY, SP1 3UT

Amanda Wallwork / Andy Fung / Angela Charles
Anna Morris / Bonnie Brown / Caroline Liddington
Carrie Mason / Chris Dunseath / David Atkins
Day Bowman / Debbie Lee / Ed Frith
Elaine Collett / Emma Davies / Fay Stevens
Faye Bowden / Fiona Campbell / Fiona Robinson
Fran Norton / Fran Quinlan / Frances Hatch
Helen Dean / Helen Simpson / Holly Yates
Ilona Skladzien / Jem Main / Jeremy Gardiner
Jindra Jehu / Julia Hutton / Katy Shepherd
Lisa Richardson / Martyn Brewster / Maureen Nathan
Paul Newman / Sarah Hough / Su Fahy

Drawing on Dorset

12 October - 3 November



The Slade Centre, The Square, Gillingham SP8 4AY

Wednesday - Sunday 10.30am - 5pm

07775 431652 / sladecentre.com

DORSET VISUAL ARTS + EVOLVER

dorsetvisualarts.org



THE CHESTERF!ELDS

SEPTEMBER 2019

MONDAY 16

LE PUBLIC SPACE, NEWPORT

+ ARREST! CHARLIE TIPPER
+ DJ TIM HALL (DAYTRIP RECORDS)

TUESDAY 17

THE CLUNY, NEWCASTLE*

+ ST JAMES INFIRMARY
+ DJ STEPHEN JOYCE (WOOSH)

WEDNESDAY 18

NIGHT AND DAY CAFE, MANCHESTER*

+ THE SUNCHARMS
+ DAI-NICHI
+ DJ ADRIAN GENT

THURSDAY 19

HARE & HOUNDS, BIRMINGHAM*

+ THE PROCTORS
+ DAI-NICHI

FRIDAY 20

100 CLUB, LONDON*

+ THE WALTONES
+ RODNEY ALLEN
+ DAI-NICHI
+ DJ JOHNNY DEE

SATURDAY 21

THE ELECTRIC PALACE, BRIDPORT

+ DAI-NICHI
+ DJ ALAN FLINT

SUNDAY 22

THE LOUISIANA, BRISTOL*

+ RODNEY ALLEN
+ DAI-NICHI
+ DJ ROCKER (THE FLATMATES)



AGMP.CO.UK
SEETICKETS.COM
0871 220 0260



FOLLOW
THE CHESTERF!ELDS
FOR UPDATES



ART BY THE TERRIBLE HILDAS



'After Effects' by Michelle Griffiths (2019)

Group 7

2 September – 12 October 2019

Atkinson GALLERY



MILLFIELD

Millfield, Street, Somerset BA16 0YD • Monday - Saturday 9.30am - 5pm
www.atkinsongallery.co.uk • Tel: 01458 444322 / 444176

